



Match Sponsor



Match Ball Sponsor



Programme Sponsor



Associate Sponsor



Official Match Day Programme • Issue FL17 • £3

**v SWINDON TOWN**

Saturday 27th February 2016, 3pm

**ABAXSTADIUM**

Shirt Sponsor



Rear Shirt Sponsor



Rear Short Sponsor







# Experience Matchday like Never Before

**PAY TO PLAY ALONGSIDE  
YOUR CLUB LEGENDS**

**Sunday 20th March – Kick off 2pm at the ABAX Stadium**



- ▶ Minimum 60 mins - over 16's only
- ▶ Featuring Grant McCann, Jack Collison, Dave Farrell, Ryan Semple, Lee Howarth, Noel Luke, Marcus Ebdon and Tommy Robson, (Manager)
- ▶ Man of the Match presentation
- ▶ Complimentary replica shirt, refreshments and picture
- ▶ Free entry for spectators

**All proceeds go to charity**

**Book your place in the team immediately for just £225**

For more information visit [www.mickgeorge.co.uk /charitymatch](http://www.mickgeorge.co.uk/charitymatch)  
or call 0800 587 3329

*Sue Ryder*



**MICK GEORGE**



*Working together*



## THE BOARDROOM

Chairman: Darragh MacAnthony, Chief Executive Officer: Bob Symms, Director of Football: Barry Fry, Directors At Hand: Bob Symms, Ted Hennessey and Sarah O'Callaghan, Patron: Lord Mawhinney, Company Secretary: Ted Hennessey, Boardroom Host: Bob Burrows

## DRESSING ROOM

Manager: Graham Westley, Assistant Manager: Grant McCann, Head Physiotherapist: Jonathan Chatfield (BSc Hons, MCSP, HCPC, ACPSEM), Osteopath: Joseph Robinson (BSc Hons Ost, DO, Podiatrist/Chiropractor: Charles Sayegh (BSc Hons Pod, MChS, HCPC, Sports Scientist, Neal Lattimore, Kit Manager: Neil Gibby, Performance Analyst: Carl Pope, Head Chef: Arthur Donnelly

## ACADEMY

Academy & Youth Team Manager: Kieran Scarff, Youth Development Lead Phase Coach/Head of Coaching: Ryan Serraple, Lead Foundation Phase Coach/Head of Recruitment: Nick Sheppard, Academy Operations Manager: Kayleigh Stent, Academy Head of Sports Science & Medicine: Keri Surman, Academy Video Analyst: Mike Wallace, Head of Education: Sara Foster

## COMMUNITY

Community Manager: Nick Sheppard, Manager of Health & Education: David Farrell, Community Development Officer: Sam Daltow, NCS/Women and Girls Officer: Jenna Dunster, Futsal Manager & Community Coach: Michael Johnson, Community Coach: Gavin Baxter, Community Apprentices: Ryan Johnson & Callum Aven

## BEHIND THE SCENES

Club Secretary: Liz Elsom, Head of Media & Ticketing: Chris Brewer, Commercial Manager: Alex Harris, Commercial Executive: Homs Jones, Retail Manager: Emma Green, Office Manager: Mary Faxon, Ticket Office Manager: Harry MacNicol, Ticket Office Assistant & Photographer: Tom Stent, Finance Controller: Dawn Gore, Press Officer/Editorial: Phil Adams, Magazine Editor/Club Photographer: Joe Dent

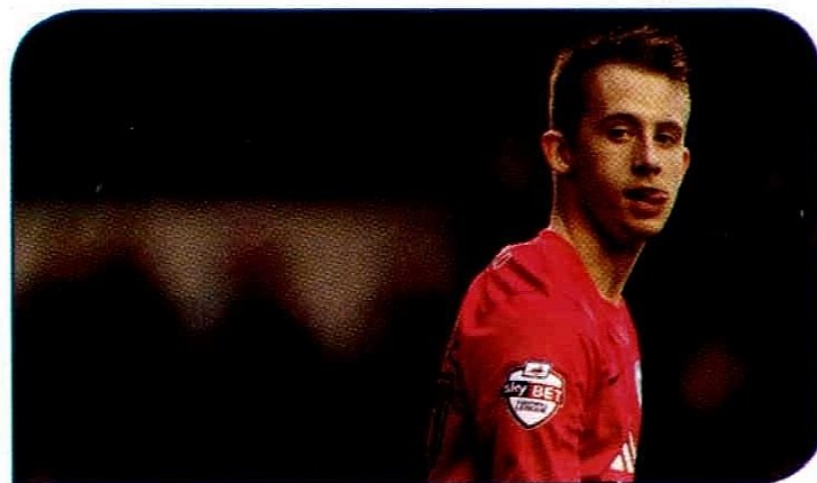
## OTHER

Pitch Maintenance: Sportsturf, Ground Maintenance: Richard Weston Maintenance, Information Technology: 42its, Club Chaplain: Rev Richard Longfoot, Club Doctor: Cosmos (C.P. Nnochiri), Club Bank: Barclays Commercial, Club Solicitors: Pinder Reaux Solicitors, Club Accountants: Stephenson Smart & Co, Club Illustrator: Matt Pascoe

## MATCH DAYS

Safety Officer: David Stent, Deputy Safety Officer: John Robinson, Posh Ground Tours: Tony Broughton, Match Day Announcer: Ben Stevenson, Mascot Co-Ordinator: Simon Morby, Club Historian: Peter Lane, Club Statistician: Mick Robinson, Programme Shop/ Subscriptions: Nigel Cowling and Mick Sexton, Mr Posh: Mick Jones, Miss Posh: Jess Weaver, Peter Burrows: Wayne Day, Match Day Commentator: Huw Williams

The views expressed in this programme are not necessarily those of Peterborough United Football Club. We would like to thank all our programme contributors for all their help in producing this match day programme. For information on club policies, please refer to our Customer Charter which is available to download from www.theposh.com



# 28 Player Interview

## 4 The Gaffer

## 8 16/17 Season Tickets

## 13 The Visitors

## 20 Match Action

## 40 In The Community

## 50 Pete's Memory Lane

## 66 Ticket Details

## 69 Next Away



# 52 Hall of Fame

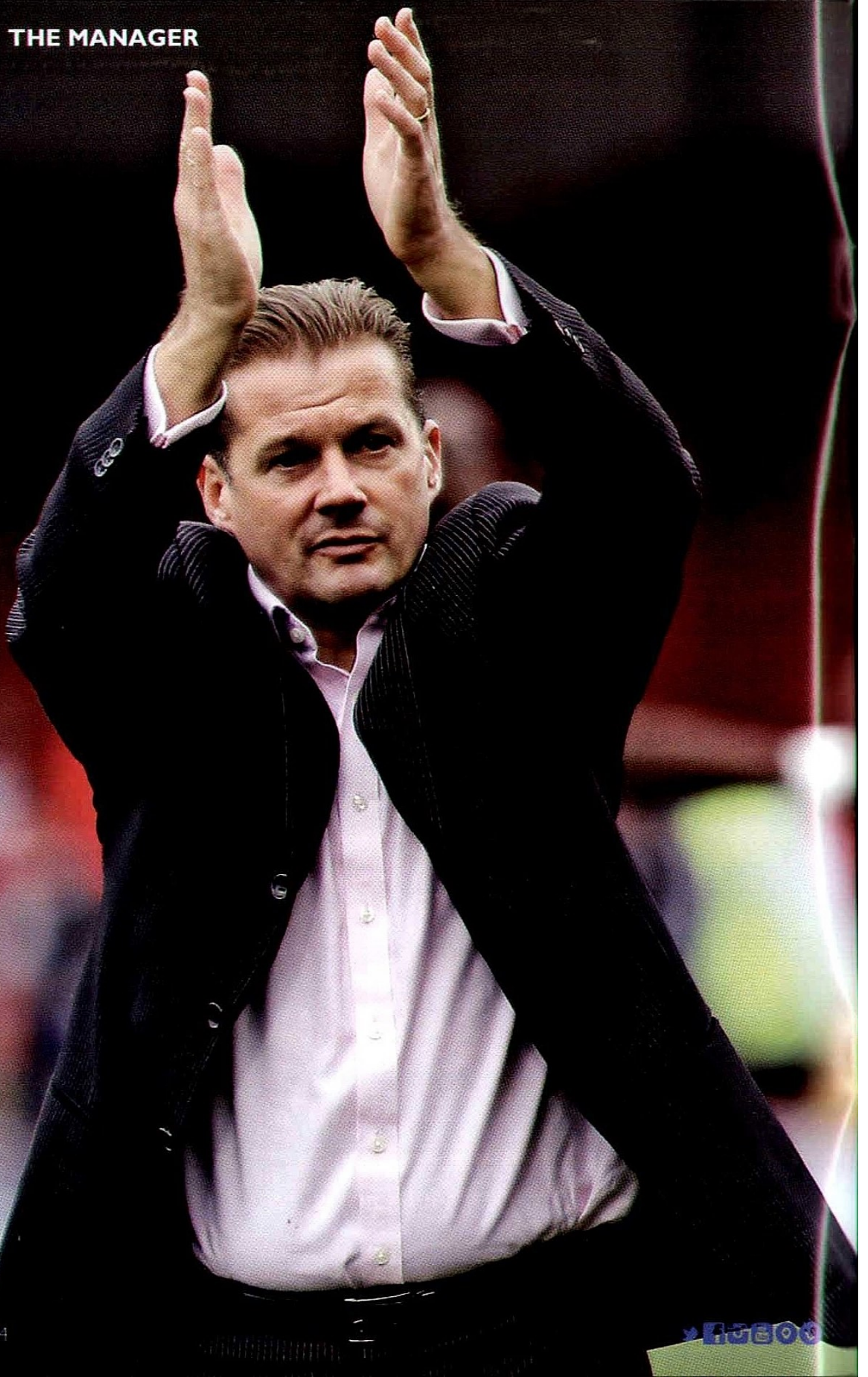


2100800115435



Match day magazine designed and produced in house. Printed by Regal Litho. Pictures used in this programme are copyright Joe Dent/Peterborough United, PA Images, JMP UK, unless otherwise credited.







**Kit Sponsored By**  
 E. Hennessey & Co  
 Accountants  
 01923 712745

# THE GAFFER

by Graham Westley

I was perfectly happy taking plaudits after we reached 6 wins on the bounce in December so I have to take it on the chin as I face up to an awful run of 5 losses in 6 League games, only softened by Cup draws. The reality is that we are in mid table and aren't as good as our best form indicated. Neither though are we anywhere near as bad as our recent League form indicates!!

There are all sorts of explanations for the poor run we have produced but there is no point in going into it all; it just sounds like excuses and that's a weak response. I am paid to produce good football despite any issues and that is what I've been working on with the lads.

As the old saying goes, it is easy to Captain a ship when the sea is calm!

Thankfully, I have a terrific and learning squad of players and they have bounced back, opened up and trained well to prepare for this afternoon.

One thing that is obvious is the mental aspect following our

Cup exit. We temporarily lost our focus and although that is less than we should expect of ourselves, it can happen with a new, young squad.

That young squad has been through a fair amount of churn and change, and I am still learning personnel; what they can and cannot do, what brings the best out of them. Unfortunately, when a Manager is learning a squad he gets stuff occasionally wrong and we've suffered the type of slump that can happen in the learning phase. Trust me; I'll learn quick.

My focus is just on kicking on from here.

It wasn't so long ago that Barnsley didn't put a foot right. Now they can't put a foot wrong. It happened 'just like that'. The lads have already shown that we are all capable of winning together and the object this afternoon is just 3 points.

Yes we have to rediscover our 'mojo'. But at least we all know there is one there to rediscover!!!!

When we pass the ball, with

purpose, when we cross and shoot with hunger, when we work as we can work, we are very difficult to play against. It is time for us to get back to the type of play that scared Premier League opposition and the type of play that was entertaining our Public.

We know what is expected of a Posh team, we know what we can do and all our plans are around doing that. We definitely owe you all a winning show.

Please give the lads your full support; I know we have not given you much since the West Brom game here. But although we cannot change the past, we can kick on and we are mentally ready to do so.

Onwards; Upwards.  
 GW





# THE MAYOR OF PETERBOROUGH OFFICIALLY OPENS ABAX'S NEW UK OFFICE

**T**he Mayor of Peterborough joined guests from Peterborough United Football Club to officially declare ABAX's new office open.

ABAX has relocated its UK office to the Allia Future Business Centre situated inside the ABAX Stadium – home of Peterborough United Football Club.

The technology company currently employs 50 people at the Peterborough office, with space for further expansion as the company extends its activity across the UK. Chris Miller, ABAX UK Chief Executive, said: "A number of new recruits have started with us this year to double the size of ABAX's UK team. The new space and facilities at our offices are proving

to be the perfect environment.

"Peterborough remains at the core of ABAX's UK operation. We are recruiting locally and the central location of the city is allowing us to spread our activity further across the UK. For example, we now have a team of six focusing on London. I would like to thank The Mayor of Peterborough and all our other guests, including from Peterborough United Football Club, for attending our officially opening.

The Mayor of Peterborough, Councillor John Peach, cut the ribbon to open the new office. He said: "It gives me great pleasure to officially open this impressive new office for ABAX, a company that is so obviously flourishing in Peterborough. I wish all those involved much success as the ABAX business

continues to grow in the UK."

Also present at the opening were Peterborough United Chief Executive Bob Symns, Director of Football Barry Fry and Manager Graham Westley. Graham also spoke to the gathered guests and welcomed ABAX to the centre. Norwegian-owned company ABAX also operates in Norway, Sweden, Denmark, Finland and the Netherlands. ABAX signed an initial five-year partnership deal with Peterborough United in November 2014.

The opening took place on the eve of Peterborough United's Emirates FA Cup 4th Round replay at the ABAX Stadium. The centre, which opened in summer 2015, is run by charity Allia. For more information on ABAX visit [www.abax.co.uk](http://www.abax.co.uk).







The difference is ABAX<sup>TM</sup>

# THIS IS ABAX TRIPLOG

Trip records and real time tracking of your cars, vans and trucks. All made easily available through our easy-to-use web interface. Accurate satellite vehicle tracking ensures optimal fleet management, ensures tax compliance and contributes to substantial savings on your fleet.



QUALITY-  
GUARANTEE

ABAX

## QUALITY GUARANTEE

ABAX continuously works to deliver the highest possible quality products and services to all customers through NEMKO and ISO Quality Standards; 9001 14001 and 27001.



SUPPORT

ABAX

## 24 HOURS CUSTOMER SUPPORT

ABAX provides customers with 24/7 phone and email support from a highly qualified team.  
Call us on 01733 69 88 88

LIFETIME-  
WARRANTY

ABAX

## LIFETIME WARRANTY

Our GPS units are of high quality, and meets the IP 67 standard regarding dust and water. Should a problem arise with our units, we will replace them free of charge.

ABAX Eaglethorpe Barns, Warmington, Peterborough, PE8 6TJ  
info@abax.co.uk, 01733 69 88 88, www.abax.co.uk



# SEASON TICKET EARLY BIRD

# FROZEN

**H**i Posh faithful, Season Ticket time again and as we reflect on the last eight months, I'd say we've had the usual roller-coaster ride that seems to come with being a regular at the ABAX Stadium.

The difference between the highs and lows are never easy to explain with the post FA Cup games being a perfect example, but what I can assure you of is that WE ... and I mean everyone at the football club, will be digging very deep to have the best finish to the season that we can possibly manage.

So, let's kick off on a positive note.

The early-bird season ticket prices for next season are being frozen with no increase but will only be available →

Until 31st March

From 1st April

## London Road Terrace

Price Class		Per match		Per Match
Adults	£295	£12.83	£350	£15.22
Seniors /18-21 Year Olds	£220	£9.57	£260	£11.30
Juniors U18	£75	£3.26	£100	£4.35

## North/South Stands

Price Class		Per match		Per Match
Adults	£425	£18.48	£500	£21.74
Seniors /18-21 Year Olds	£250	£10.87	£295	£12.83
Juniors U18	£75	£3.26	£100	£4.35
Children U10*	£10	£0.43	£10	£0.43

## Motorpoint Stand

Price Class		Per match		Per Match
Adults	£380	£16.52	£440	£19.13
Seniors /18-21 Year Olds	£240	£10.43	£280	£12.17
Juniors U18	£75	£3.26	£100	£4.35
Children U10*	£10	£0.43	£10	£0.43

## Caroline Hand Executive Suite

Price Class		Per match		Per Match
Adults	£700	£30.43	£735	£31.96
Concessions	£525	£22.83	£545	£23.70

\*Under 10s must be accompanied by an adult over 18 (maximum of 3 children per adult). £10 cost will be refunded in club cash upon attending at least 15 home league games.

until 31st March (with Zebra Finance available). During the second phase, there will be a small percentage price increase on last year's phase 2 cost (with Zebra Finance available).

There will also be no increase on matchday pricing as we attempt to keep our structure as affordable as possible. Whilst our overhead costs for the stadium continue to rise I am always mindful of the financial challenges that you are presented with on a daily basis.

Also not changing from last season is the draw to find three Season Ticket holders who will have bought their new tickets in the early bird phase and are registered on our database with a valid email address and subscribed to receive email notifications. You will be reimbursed the cost of your tickets and will enjoy the season free of charge.

Thank you for your pride, passion and loyalty.



**Darragh MacAnthony**  
Chairman





## BENEFITS

- **23 Home League Games** - guaranteed seat for 23 Sky Bet league games at the ABAX Stadium.
- **Personalised smartcard** - you will receive your own credit card sized smartcard for the season. Existing season ticket holders use their current card.
- **Additional Games** - includes first refusal to all Peterborough United FA Cup, Capital One Cup and JPT (if applicable) games (home & away). Season ticket holder will be required to pay for any cup or friendly games. Access for entry can be added to your smartcard for games at the ABAX Stadium.
- **Automatically enrolled into Club loyalty scheme** - club cash sits as a loyalty scheme on your season card and can be used to buy merchandise in the store or additional tickets for games at ABAX Stadium.
- **Earn 10% Club Cash on merchandise** - every time you buy merchandise you will earn 10% back in club cash.
- **Earn 5% Club Cash on additional tickets** - every time you buy home, away or cup tickets you will earn 5% back in club cash.
- **Earn 10p in Club Cash on goals scored** - every time the team scores a league goal at home and you attend, you get 10p in club cash!
- **Exclusive discounts for additional Posh events** - gain discounts on live events hosted by the football club.

## QUALIFYING DATES

### Senior Citizen (60+)

Applies to applicants born before 1st August 1956.

### Juniors (U18)

Applies to applicants born on or after 1st August 1998.

### Children (U10)

Applies to applicants born on or after 1st August 2006.

### 18-21 Year old

Applies to applicants born on or after 1st August 1995 and before 1st August 1998.

### Disabled Fans

Must produce proof of medium-high disability allowance.

## MOTORPOINT STAND

Those renewing or purchasing in the Motorpoint Stand should be aware that for certain league and cup fixtures you may be required to relocate to an alternative stand (at no extra cost).

## LONDON ROAD TERRACE

Due to the possible redevelopment of the London Road Terrace, there are a number of scenarios that could occur ahead and during the 2016/17 campaign. The club has consulted with the supporters' groups and as a result, have decided that the best course of action is to only sell season tickets in the London Road Terrace to existing season ticket holders of that area. Those who decide to renew their season ticket in the London Road Terrace will be kept up to date with developments along the way and must be aware of the possibility of relocation to the North, South or Motorpoint Stands before or during the season. If relocation occurs, there will be no additional cost implication to supporters.

## RENEWING? RETAIN YOUR 15/16 CARD

Access for the 2016/17 season will be added to your current season card if you are renewing the same seat.

## RESERVED SEATS

All seats will be reserved for the current season ticket holders to renew until **5pm on Thursday 24th March**. After this date any unsold reservations will be released for general sale.

## HOW TO PURCHASE

Season tickets can be bought via the following ways:

### WEB

Visit [www.theposhtickets.com](http://www.theposhtickets.com)  
No card fees.

### IN PERSON

At ABAX Stadium Ticket Office.  
No fees for debit cards. £5 fee per transaction for credit cards.

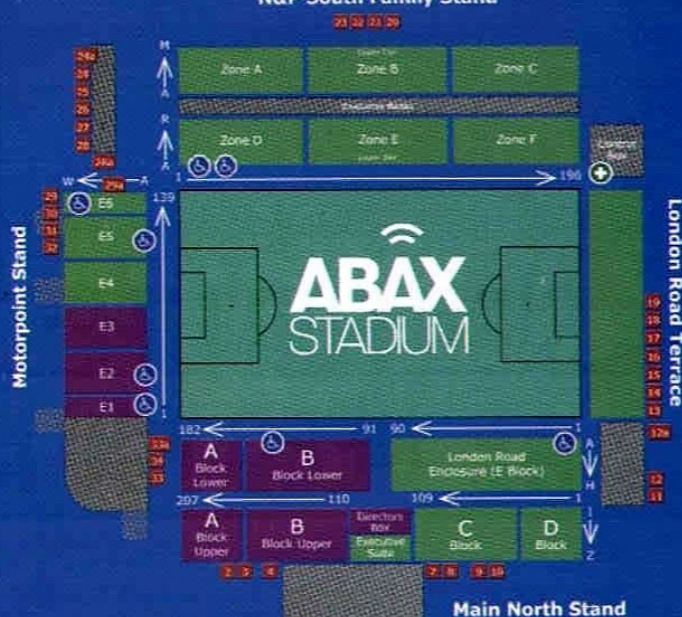
### POST

No fees for debit cards. £5 fee per transaction for credit cards.  
Download an application form from [www.theposh.com](http://www.theposh.com) or pick one up from the Ticket Office.

### TELEPHONE

Call the Ticketmaster hotline on 0844 847 1934 (calls cost 7ppm plus your network access fee).  
No card fees. Booking fee of £1.75 per season ticket.

## N&P South Family Stand



### Key

- Available areas for season tickets
- Areas not available for season tickets

## CONCESSIONS

The onus is on the purchaser to supply proof of status to claim any concessionary discount at time of sale and also on a match day when entering the stadium if requested. Failure to provide such proof could result in having to upgrade to a full adult ticket. Should you require someone else to use your season ticket on a match day and their price class is different to that of your season ticket, you may be required to pay the difference in price as an upgrade which can be obtained from the Ticket Office.

## MISPLACED CARD

Keep your smartcard safe. If you lose or forget your card on a match day, a replacement match day ticket will be issued\* for a non-refundable admin fee of £5 at the Ticket Office. A replacement smartcard will only be issued\* on a non-match day for a non-refundable admin fee of £5. \*On proof of identity.







# SIGN FOR LIFE: WE NEED YOU IN OUR TEAM

From today until Sunday 13th March, NHS Blood and Transplant is running a nationwide campaign, supported by football and rugby clubs, sports charities and other organisations, asking fans to sign up to the NHS Organ Donor Register and help save lives.

Three people die each day in need of a transplant and there are currently around 6,500 people on the waiting list in the UK because

of a shortage of organ donors. We want to blow the whistle on these figures and do something about it.

How to get involved:

- Join our team: register as an organ donor at [organdonation.nhs.uk/signforlife](http://organdonation.nhs.uk/signforlife) or call 0300 123 23 23.
- Share your decision with your family, as NHS Blood and Transplant will need them to support donation going ahead.
- Follow the campaign on social media using [#signforlife](https://twitter.com/signforlife).

**NHS**

**Blood and Transplant**



# POSH SUPPORTING NCS PROGRAMME

Peterborough United Football Club highly recommend and support the NCS programme which saw players Jack Baldwin, Tom Nichols and Martin Samuelsen wearing the NCS t-shirts during their warm up before the Sky Bet League One fixture against Bradford City.

National Citizen Service (NCS) is an experience you really don't want to miss. If you're 15 to 17

years-old, this is your chance to embark on exhilarating challenges, make your mark and build skills for work and life. More than 200,000 young people have already said YES to NCS. Don't Miss. Out.

Your next NCS programme with Peterborough United Football club is taking place this summer, email [jenna.dunster@theposh.com](mailto:jenna.dunster@theposh.com) for more info and to sign up!





# Schools out for Summer.

Relax, you can choose, buy and drive home your next car in a single visit.

Motorpoint Peterborough is open 7 days a week and you can choose, buy and drive home a low mileage nearly new car all on the same day.

You can even part-exchange your current vehicle, arrange finance for your next car and enjoy great savings\* all in the same trip.

Search over 4,000 cars from 35 manufacturers at [motorpoint.co.uk](http://motorpoint.co.uk) now.



<b>14 REG</b> HYUNDAI i30 1.4 ACTIVE 5DR <b>£8999</b> SAVE £7571*	<b>13 REG</b> CITROEN C1 1.0 VTR 5DR <b>£5299</b> SAVE £4761*	<b>64 REG</b> VAUXHALL ASTRA 1.6 ELITE (BLUETOOTH) 5DR <b>£10999</b> SAVE £10756*	<b>14 REG</b> VAUXHALL CORSA 1.2 (AC) EXCLUSIV EASYTRONIC 5DR <b>£5999</b> SAVE £8536*	<b>64 REG</b> BMW 320D M SPORT (BUSI- NESS MEDIA) TOURING <b>£21999</b> SAVE £12166*
---	---	---	--	--

Motorpoint. Car buying made easy.



Test Drives  
Available



Competitive  
Part Exchange



Finance  
Available



Same Day  
Driveaway

Motorpoint Peterborough Edgerley Drain Road PE1 5NL

Call **01733 828 400**

Open 7 days a week and until 8pm weekdays



**MOTORPOINT**  
THE CAR SUPERMARKET

\*Savings shown are against New UK List Price. All prices exclude Road Fund Licence and a First Registration Fee at the current rate where applicable. A Pre-Delivery Fee of £99 (optional) includes, MPI Certificate, PDI, Service (if required) and valet. Motorpoint Ltd will introduce you to a limited number of finance providers that we have carefully selected and we may receive a benefit from them. Specification subject to confirmation on inspection. Vehicles may be moved from site to site at an additional cost. Images are for illustration purposes only. Prices correct at time of press. Finance subject to status. Terms and conditions apply. Applicants must be 18 or over. Guarantees/Indemnities may be required. Motorpoint Ltd is authorised and regulated by the Financial Conduct Authority for consumer credit activity and our registration number is PRN 084004.





Nene Park Golf  
PETERBOROUGH

## Where Great Value Golf Begins

Nene Park Golf is proud to offer two superbly maintained 18-hole courses, Thorpe Wood and Orton Meadows, which challenge golfers in all aspects of their game and test all levels of skill and ability.

Enjoy the views of the beautiful golf courses at either The Granary or The Woodman, or come and browse around the American Golf Store at Thorpe Wood. Whether you want to play golf, learn golf or as yet have no interest in golf at all, we are sure that once you know we're here, you'll keep coming back for more.



### DISCOUNT OFFER

Nene Park Golf would love to see you back here again soon. Please do take advantage of one of our discount offers:

- ☐ 10% off a round of golf at either Thorpe Wood or Orton Meadows
- ☐ Free child round with purchase of adult round at Orton Meadows' Pitch and Putt course
- ☐ 60 balls for the price of 30 at the Thorpe Wood Driving Range

\*Please tick the offer you would like and fill in your name, address and email on the reverse side

\*This discount voucher may only be used once

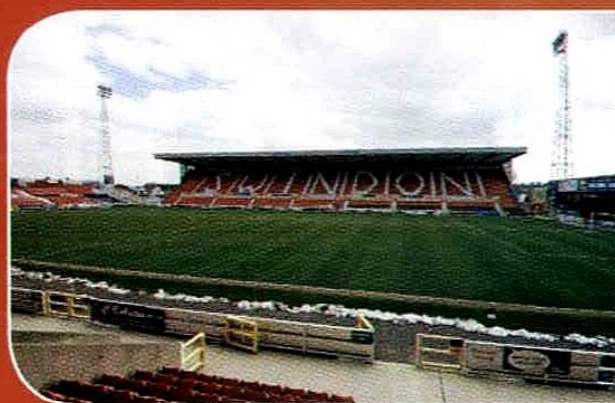


**Nickname(s):** The Robins  
**Founded:** 1879  
**Chairman:** Lee Power  
**Last Seasons Finish:** 4th, League One  
**Stadium Name:** The County Ground  
**Capacity:** 15,728  
**Stadium Opened:** 1896  
**Address:** County Road, Swindon, SN1 2ED  
**Distance From ABAX Stadium:** 111.9 miles



**Last Time Out:** Swindon Town 3-2 Blackpool (20/02/16)  
 Vigouroux, N. Thompson, Sendles-White, Turnbull, Barry, Robert (landolo), Traore (L. Thompson), Doughty, Ormonde-Ottewill, Obika, Ajose.

## THE VISITORS



# SWINDON TOWN

Swindon Town are the visitors to the ABAX Stadium this afternoon and the Robins arrive in good form after collecting seven points from the last three Sky Bet League One fixtures including an emphatic 4-1 away win at Colchester United.

In fact, the recent resurgence, which has seen them move away from danger at the foot of the division, has largely been down to the form of striker Nicky Ajose. The former Manchester United youngster, who joined Posh after Old Trafford, netted a hat-trick in the recent 3-2 success over Blackpool at the County Ground.

All three of those goals were excellent poacher finishes and took his tally to five in two games ahead of his return to the ABAX Stadium this afternoon. Ajose has now netted 19 goals this season and is one of the division's leading marksmen.

Luke Williams is the current gaffer at the County Ground. He started his coaching career working as an FA Skills Coach and moved on to the youth set-ups at Leyton Orient and West Ham United. Williams later

became a development coach at Brighton & Hove Albion where he managed the U21 for three years and also coach the reserves. During his time at Brighton,

In 2013, Luke Williams was appointed First Team Coach at Swindon Town and was instrumental in bringing in former Brighton development players Yaser Kasim and Raphael Rossi Branco, both of whom would become regular starters for the Wiltshire side. Williams worked as assistant to Mark Cooper and helped get Swindon Town reach the 2015 League One Play-Offs before losing to Preston North End in the final.

When Mark Cooper was sacked by Swindon Town during the early stages of the following season, Williams worked as assistant to caretaker manager-chairman, Lee Power, and Cooper's eventual replacement Martin Ling. On December 30 2015 he was appointed caretaker manager following Ling's sudden resignation.

In his first two games in charge, Williams led Swindon to home victories (4-2 vs Southend United and 4-3 vs Crewe Alexandra), from losing positions, with late winners from Nicky Ajose on both occasions. On 21st January 2016, Williams was appointed permanent manager of Swindon Town until the end of the 2015/16 season.







1 GOALKEEPER 6ft 1in 19/11/93

### LAWRENCE VIGOUROUX

Liverpool goalkeeper is currently on loan at the County Ground until the end of the 2015/16 season. He was snapped up by Tottenham in 2012 before moving to Merseyside in the summer of 2014. Last term the former Chilean youth international was a regular for the Under-21 side at Anfield.



2 DEFENDER 5ft 7in 09/11/90

### NATHAN THOMPSON

A product of the Swindon Academy, he made his breakthrough into the first team during the 2012/13 campaign. The tough-tackling defender was a regular as Swindon made the League One Play-Offs. He is one of the first names on the teamsheet, a firm fans' favourite and Captain of the team.



3 DEFENDER 6ft 0in 21/12/95

### BRANDON ORMONDE-OTTEWILL

The left wing-back joined the Town from Arsenal having spent his scholarship with the Gunners. He featured regularly during pre-season and will be hoping to make the left back/left wing-back slot his own over the course of 2015/16 after making his Swindon bow on the opening day of the season.



6 DEFENDER 6ft 1in 30/10/94

### JORDAN TURNBULL

Turnbull is back at Swindon on a season-long loan from Southampton following a successful spell with the club during the 2014/15 campaign. He had started out in the Swindon academy before joining the Saints in 2007. Last season he was an ever-present, as the Robins reached the play-offs.



21 DEFENDER 5ft 10in 10/04/94

### JAMIE SENDLES-WHITE

Defender Sendles-White is a Northern Ireland under 21 international and joined Swindon during the January transfer window following his release from Scottish Premiership side Hamilton Academical. He had come through the ranks at QPR before moving to Scotland in August 2015.



27 DEFENDER 6ft 0in 13/02/95

### BRADLEY BARRY

The former Brighton and Hove Albion defender, the nephew of Everton and England midfielder, Gareth, put pen to paper on a one-year deal in August 2015 following a successful trial period. Barry, who plays as a right-back, worked alongside Town's manager, Luke Williams at the Amex.





29 DEFENDER 6ft 3in 25/07/90

### RAPHAEL ROSSI BRANCO

Formerly with the academy at Brighton and Hove Albion, the Brazilian centre-half penned a deal with Town in the summer of 2013 after a successful trial period. He was a regular fixture last term as The Robins reached the Play-Off final at Wembley.



4 MIDFIELDER 5ft 9in 06/01/89

### FABIEN ROBERT

The midfielder put pen to paper on a one-year deal with a year's option in the summer of 2015 after a short trial spell with the Town. The Frenchman moves to Wiltshire after the expiration of his contract at Ligue 1 side, FC Lorient. Robert has also represented his country at junior level.



7 MIDFIELDER 5ft 9in 25/03/92

### DRISSA TRAORE

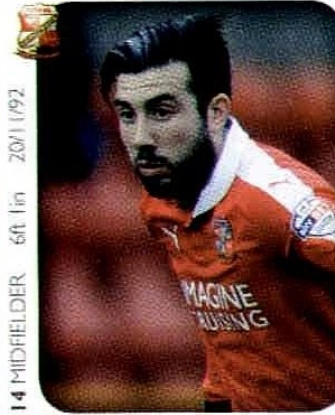
Traore started his career in his native France with Le Havre and has most recently plied his trade for Notts County. He signed for Swindon during the Summer of 2015 and has also represented France at junior level before playing for the Ivory Coast in an Olympic qualifier.



8 MIDFIELDER 5ft 11in 10/05/91

### YASER KASIM

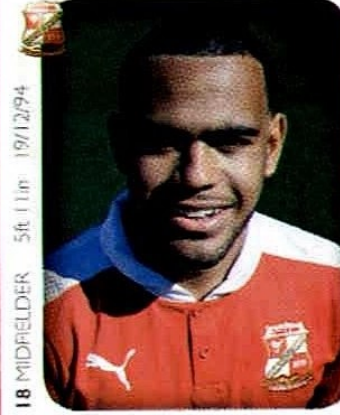
A former player with Brighton's Academy side, Kasim penned a permanent deal with the Town ahead of the 2013/14 campaign. In his time at the Amex Stadium, the classy holding midfielder spent time on loan at Luton Town and Macclesfield Town. He has also represented Iraq at international level.



14 MIDFIELDER 6ft 1in 20/11/92

### MICHAEL DOUGHTY

Welsh under 21 international midfielder Doughty is currently on loan at Swindon from Championship side Queens Park Rangers. He had come through the youth system at Loftus Road and has enjoyed league experience with loan spells at Crawley, Stevenage and Gillingham.



18 MIDFIELDER 5ft 11in 19/12/94

### LOUIS THOMPSON

Thompson, younger brother of Swindon captain Nathan, came through the youth ranks at the County Ground before his impressive performances prompted Norwich City to sign the flying winger. He has since returned to the County Ground on a loan deal till the end of the season.





19 MIDFIELDER 5ft 8in 19/04/94

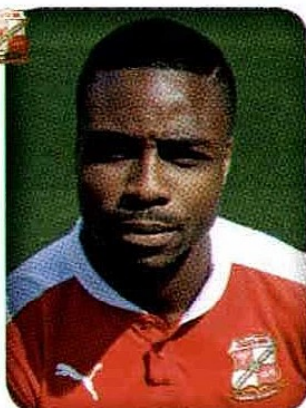


**JEREMY BALMY**

The young midfielder joined Swindon Town on a one-year deal in September 2015. Balmy had spent the previous two seasons with Notts County after a youth career with Le Havre in his native France and has most recently been on the books at League Two side Oxford United.



20 STRIKER 5ft 11in 12/09/90



**JONATHAN OBIKA**

After a brief spell on loan at the County Ground in 2011, Obika is now back in Wiltshire on a permanent deal having joined on deadline day 2014 from Tottenham Hotspur. The former Posh loanee netted twice on his debut at Bradford and went on to score in his first four games, equalling a club record.



24 STRIKER 5ft 10in 28/06/93



**JERMAINE HYLTON**

The pacey striker penned a two-and-a-half year contract with Swindon in the January 2015 transfer window, joining from non-league side Redditch United. Formerly with Birmingham City and Kidderminster Harriers before breaking into the Redditch side.



10 STRIKER

**NICKY AJOSE**

5ft 11in 07/10/91

The former Swindon Town loanee agreed a three-year deal at the County Ground in September 2015 after leaving former club, Leeds United. Having started his career with Manchester United, Ajose spent time on loan in Wiltshire from Peterborough United at the start of the 2013/14 season, netting ten goals in his first spell. Since leaving the Posh, he was also out on-loan at Crewe Alexandra during his stint at Elland Road. He made the perfect start to life back at SNI, finding the net on his second debut against the Alex.

STAR  
MAN



Call: 0844 991 0036

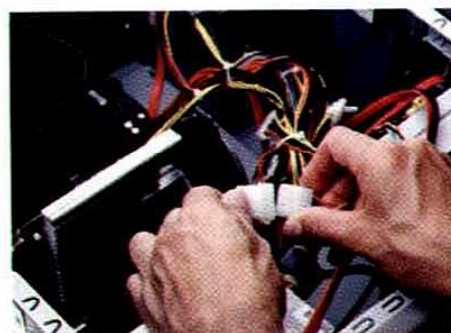


## Making IT Click

**OCS**UK  
oundle computer services

IT Support Services  
Server Management  
Remote Server  
Monitoring

IT Hardware  
Components  
Peripherals  
Software



Your **local, independent provider of computer and telephony services** offering **impartial advice** on any IT equipment or service you may require... we **guarantee** to fix any issue, error or breakdown that you have

Business Continuity  
Disaster Recovery  
Cloud Computing

OCS proudly supports  
the POSH



Call: 0844 991 0036  
[www.ocs-uk.it](http://www.ocs-uk.it)



# BUNNEY SECURES ROCHDALE WIN

**R**ochdale ended a four-match winless run as Joe Bunney's fourth goal in three games deepened Fleetwood's relegation fears. Bunney slid in the only goal of the game on 12 minutes from Jim McNulty's left-wing cross.

Bristol City loanee Wes Burns headed against the bar for the visitors late on. Fleetwood remain outside the drop-zone on goal difference, while Rochdale are nine points better off in 16th. Rochdale manager Keith Hill told BBC Radio Manchester:

"It was important to get to get these three points as it backs up our two previous draws. It's no good being a development coach or manager, my history and my success at the club doesn't mean nothing.

"It's about this season and we needed the three points and we got them. I'm trying to establish this football club in League One and I feel we are in line for that. That would be success for me."

Bury and Barnsley missed a chance to close on the play-off places, playing out a goalless draw at Gigg Lane. Conor Hourihane, defender Alfie Mawson and loanee Lloyd Isgrove all went close for the visitors, who were reduced to 10 men late on after Adam Hammill's challenge on Danny Rose.

Sam Winnall also volleyed over and had a header saved for a dominant Barnsley. The Tykes are six points off the top six, with Bury a further two points back. Bury manager David Flitcroft told BBC Radio Manchester:

"There was hustle and bustle, but no really clear-cut chances. That last bit of clinical precision just wasn't on show tonight. Barnsley are a good team and we've not just kept them at bay, but put real pressure on them just without that telling finish.

"Two clean sheets in the last three games has really pleased me. The Coventry game really hurt us, the lads have come out and shown that fighting spirit."

Rochdale's Joe Bunney celebrates; Picture credit: JMPUK.





**sky BET**

**PROUD TO CONTINUE OUR  
TITLE SPONSORSHIP**



**UNTIL 2019**

**COMING NEXT SEASON**

[skybet.com](http://skybet.com)





sky BET  
LIFETIME

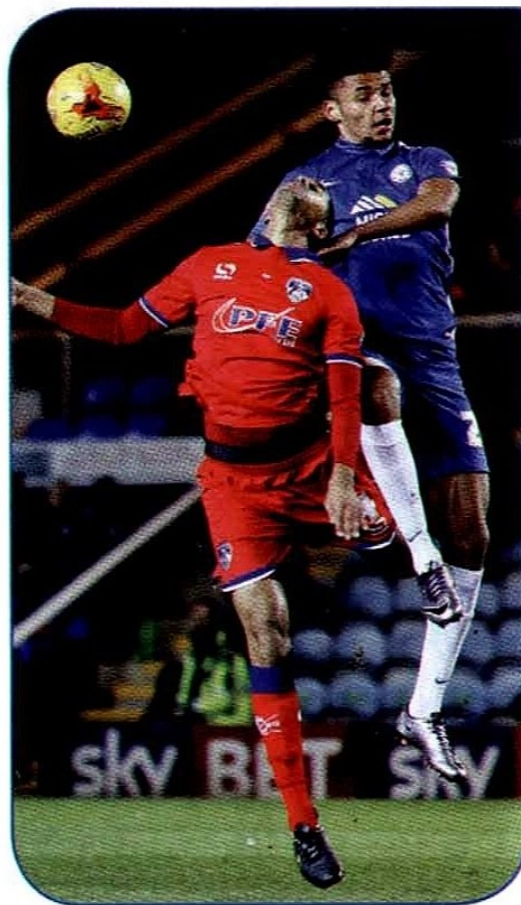
Saturday 23rd February 2016, 7.45pm  
Referee: Mr K Hill Attendance: 3,544 (183 Posh fans)



1 PETERBOROUGH UNITED



2 OLDHAM ATHLETIC







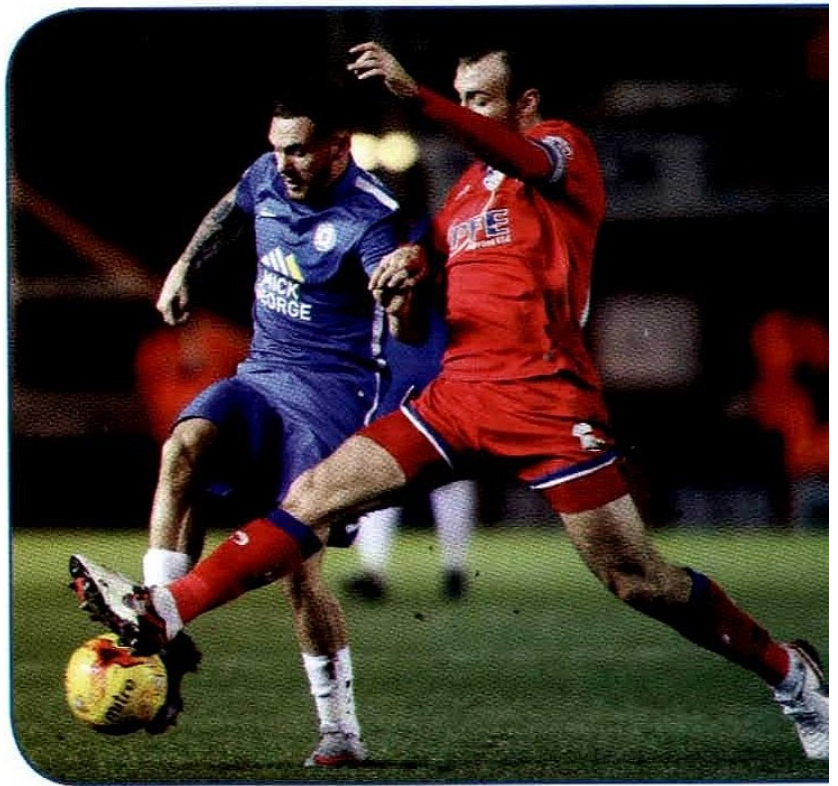
## STARTING LINE-UP'S



Alnwick	Coleman
Smith	J. Wilson
© Zakuan	Gerrard
Baldwin	Dieng
Ntlhe	Lafferty
Beautymah	Dummigan
69 ➤ Taylor	Kelly ©
Maddison	Palmer
Oztumer	Winchester
69 ➤ Coulibaly	Main 62
77 ➤ Angol	Amadi-Holloway 80

### SUBSTITUTES

Henry (gk)	(gk) Cornell
Almeida Santos	Brown
Fox	Croft
Nichols	Forte ➤ 42
69 ➤ Samuelsen	Cassidy ➤ 80
69 ➤ Coulthirst	B. Wilson
77 ➤ Williams	





Pinder Reaux & Associates Ltd  
*A law firm with a difference*



PINDER REAUX

SPORTS & MEDIA LAWYERS

*Strategy Excellence Success*

At Pinder Reaux we provide our clients with bespoke legal solutions for issues concerning media law (including online defamation), sports law and family law

Call us on 0208-252-7373 to discuss your issue  
and allow us to assist you

[www.pinderreaux.com](http://www.pinderreaux.com)

As featured in UK's Hot 100 Lawyers for 2013

**THE LAWYER**

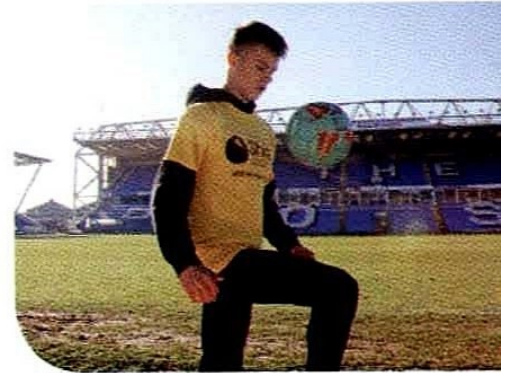


# KEEPY-UPPY CHALLENGE COMES TO THE ABAX



**D**uring the month of February, 15 year-old Brett Callow will be travelling to all 92 professional football clubs, meaning 2,000 miles of travelling. Brett will then complete a keepy-uppy challenge at each stadium keeping the ball in the air from

one side of the pitch to the other. Brett is raising money for Shine and Sport Relief 2016. To keep up-to-date with Brett's progress follow him on Twitter [@92clubcharity](#) and you can sponsor him by visiting [www.virginmoneygiving.com/brettleecallow](#).



## GROUPS ATTEND OLDHAM MATCH

**A**t our last home match against Oldham Athletic we welcomed flag bearers from Gunthorpe Harriers, Yaxley under 11s, Feeder Soccer under 13s and taking penalties at half-time was Park Farm Reds.

Do you run or are you part of a group of 12 or more? Did you know you can get discounted tickets to Posh's home league games? Visit [www.theposh.com](#) for more details.





# T-SHIRT OFFER SAVE £10!

The Posh Club Shop has new t-shirts in stock priced at £15 each or 2 for £20. You can grab yours in store or online at [www.theposhonlinestore.com](http://www.theposhonlinestore.com).



# PERSONALISED POSH GIFTS



**H**ave you ever dreamt of playing for Peterborough United? Of course you have, everybody has. Well now, thanks to a partnership with Personalised Football Gifts, you can have that feeling of being a Posh player (without the actual playing of course) thanks to some superb personalised items.

Check out [theposhonlinestore.giftstar.co.uk](http://theposhonlinestore.giftstar.co.uk) to view the pictures of all the personalised items you can purchase, an ideal present for the avid Posh fan.

At £19.99, you can own your very own signing story in a special framed newspaper front cover, which is personalised to feature your surname and of course features the signing photograph with manager Graham Westley.

Personalised mugs are available priced at £9.95 while water bottles (£12.99), cufflinks (£24.95) and a hip flask (£29.95) are all personalised to feature your name alongside the official crest.

A six pack of coasters featuring

your surname emblazoned on the back of the Posh shirt are priced at £14.99 while a Posh personalised mouse mat is priced at just £6.99. We also have a framed picture of the dressing room layout featuring your shirt and surname alongside other Posh players priced at £29.99 or £19.99 in print format.

Please note that you are unable to gain or redeem club loyalty points on these products.

Remember to check out [theposhonlinestore.giftstar.co.uk](http://theposhonlinestore.giftstar.co.uk).

# TREAT YOUR MUM THIS MOTHER'S DAY



£1.50 • Posh  
Chocolate



£10 • Large  
Honey Bear



£8 • Mothers  
Day Latte Mug



£14 • Ladies  
Leather Purse



**Make reducing print  
costs your business**

**GOAL in 2016!**

ASL is proud to support Peterborough United Football Club

ASL is one of the UK's leading independent reprographic suppliers offering the latest print, copy and scan solutions to make your business more efficient, cost effective and environmentally sound.

- ✓ Document Management Solutions (DMS)
- ✓ Colour/mono photocopiers and printers including Kyocera, Ricoh, Lexmark, Epson, Konica Minolta, Hewlett Packard
- ✓ Managed Print Services (MPS)
- ✓ Advanced software solutions to manage your document workflow
- ✓ Franking Machines
- ✓ Duplicator Printers



First class customer  
support and service  
contracts



Impartial advice and  
consultancy



Flexible finance  
options



# KEEN TO BUILD ON DEBUT

**I**n recent weeks, both striker Aaron Williams and midfielder Jordan Nicholson have both made their competitive debuts for Peterborough United.

Williams came on as a late substitute in the 2-1 home reverse to Oldham Athletic at the ABAX Stadium on Tuesday evening while Nicholson played 45 minutes in the defeat to Millwall at the Den.

Nicholson, who joined the club from non-leaguers Histon, acquitted himself well at left-back against the Lions who

eventually ran out 3-0 winners.

The youngster admitted afterwards that the result soured the day, but has given him confidence moving forward.

"It was a great feeling to make my first appearance in the Football League, but obviously the result was not what we wanted and that overshadowed the day somewhat. I wanted to go on and try and impose myself on the game.

"I am working extremely hard on the training ground to try









**Our match highlights  
have a new home for  
season 2015/16...**



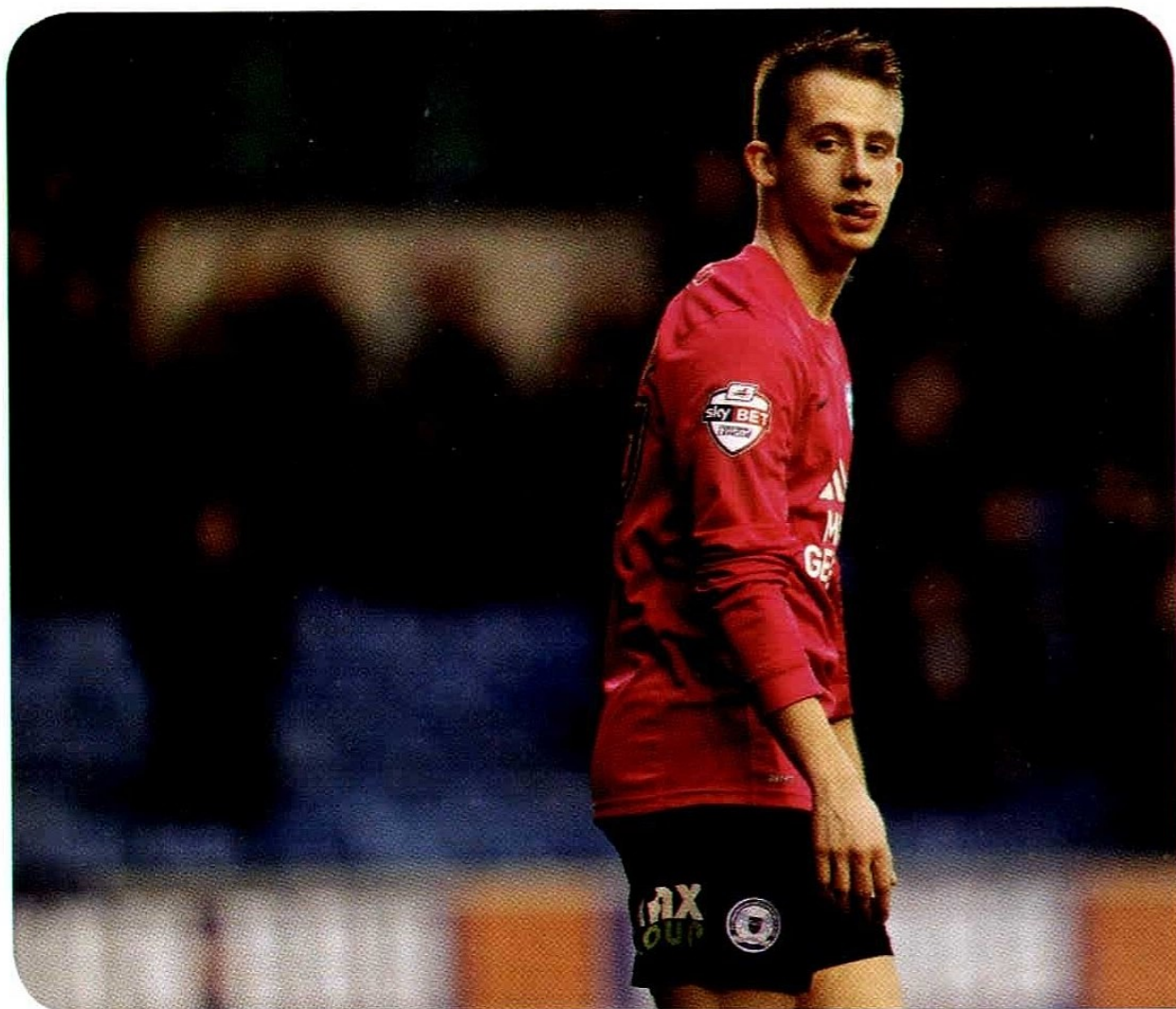
**Every goal. Every Saturday.  
Football League Tonight.**

**9pm on Channel 5**



**#FootballOn5**





and improve and hopefully I can contribute between now and the end of the season and help the team achieve our goals," Nicholson said.

The 21 year-old was a care co-ordinator for the elderly until signing a two-and-a-half year contract at the ABAX Stadium on Christmas Eve. And his arrival at Posh completes a meteoric rise up the Football League ladder.

Nicholson, who originates from Godmanchester, was playing Cambs League football in the 2013-14 season before moving



up to the United Counties League with Eynesbury Rovers and then onto Histon of the Southern Premier Division.

Nicholson scored 16 goals for Histon in his first four months at the club. That earned him a trial at Posh and within four more days he'd become a League One player. "The dream has always been there to play professional football, but for it to happen so quickly is incredible really.

"I only moved to Histon in the summer. It went really well and my confidence grew as I scored some goals. The next thing I



Jordan Nicholson battles for possession against Millwall.



**“EVERYONE KNOWS WHAT PETERBOROUGH HAVE DONE WITH YOUNG PLAYERS IN THE PAST AND I HOPE THEY CAN IMPROVE ME AS A PLAYER AS WELL**

**”**

know I'm at Peterborough and signing a professional contract. I've been pinching myself every day since as I am in the same dressing room as some idols.

"But I only have to look across the room at Conor Washington to see what can happen if you work hard. He's from the same area as

me and played at the same level for St Ives and now look at him.

"I've actually found it quite hard working full-time and then playing football so now I will just get my head down, work hard and see where it takes me. That's what the manager has told me to do and if I impress I

will get my chance.

"Everyone knows what Peterborough have done with young players in the past and I hope they can improve me as a player as well. I love to attack. I love to get on the ball and take people on, and I love to have a shot at goal."





# PRINCE CLEAN

providing a **complete cleaning** service... today

*We Clean Carpets, Upholstery, Ovens and More*  
**GREAT RESULTS - GUARANTEED!**

ALL  
CARPETS  
CLEANED  
PRICE FROM JUST  
**£65**  
+VAT



**No need for new carpets...**

Bring your old ones back to life!

- Only 1-2 hours drying time
- No harmful chemicals used
- Domestic & Commercial Service
- Fully qualified & professional staff
- Evening & weekend appointments available

Put the sheen back  
into your oven...

**You'll be amazed  
with the results!**

BEFORE



AFTER!



OVEN  
CLEANING  
PRICE FROM JUST  
**£40**  
+VAT

**100% SAFE** • Biodegradable • Non-caustic • No fumes



**Claim your introductory**

**10% Posh Discount**

when using Princeclean for the first time

Quote code:

**PUFC10FV**

**Other Services Include:**

- Office Cleaning
- Landscaping
- Builders Cleans
- Window Cleaning
- Solar Panel Cleaning
- 24/7 Fire & Flood Call Out

Contact us today for a **FREE** no obligation quote

**Call now on 0333 600 7 600**

[www.princeclean.co.uk](http://www.princeclean.co.uk) [enquiries@princeclean.co.uk](mailto:enquiries@princeclean.co.uk)

Princeclean Limited is a part of the Princebuild group of companies



Coach travel is now available for the following away trips:



**Bury** (Tuesday 1st March)

Depart: 2.30pm

Members: £19; Non-Members: £22



**Wigan Athletic** (Saturday 5th March)

Depart: 9.30am

Members: £19.50; Non-Members: £22.50



**Doncaster Rovers** (Saturday 19th March)

Depart: 11am

Members: £10.50; Non-Members: £16

# foreverposh

by Chris Abbott

**G**ood afternoon and a warm welcome to the players, officials and supporters of Swindon Town for today's Sky Bet League One fixture.

The last few weeks have been tough for everyone connected with Peterborough United as results have not been what we all hoped for. It's easy to criticise and blame players, management, chairman etc but I am sure they are all hurting as much as us fans are doing at this present time.

It's easy as a supporter to enjoy the good times, cup ties, Wembley etc but now more than ever the players and management need our support. We have not become a bad side overnight and I am sure results will improve soon.

It is hoped in the Venue prior to a match day that we will have two players who are not in the match day squad available for photos and to sign autographs, so don't forget to pop into the

venue prior to the match and enjoy a drink and too meet some players.

foreverposh Coach Travel is available the remainder of the season so please visit the club website to find our more details.

Please remember you have to get through the tough times to enjoy the good.

Keep it Posh.



Posh supporters.





GREATER  
PETERBOROUGH  
**UTC**

# BRAND NEW SCHOOL

**WORLD CLASS  
TECHNICAL  
EDUCATION**

## OFFERING:

- **CLOSE LINKS WITH INDUSTRY**
- **GUARANTEED JOB INTERVIEWS THROUGH EMPLOYER SPONSORS**
- **YOUR BRIDGE TO WORK OR UNIVERSITY**
- **£12 MILLION STATE OF THE ART BUILDING AND EQUIPMENT**

Opening September 2016 for year 10 and year 12 students who are the engineers, builders, designers and architects of the future

Next open day: **Thursday 21st January 6pm-8pm**

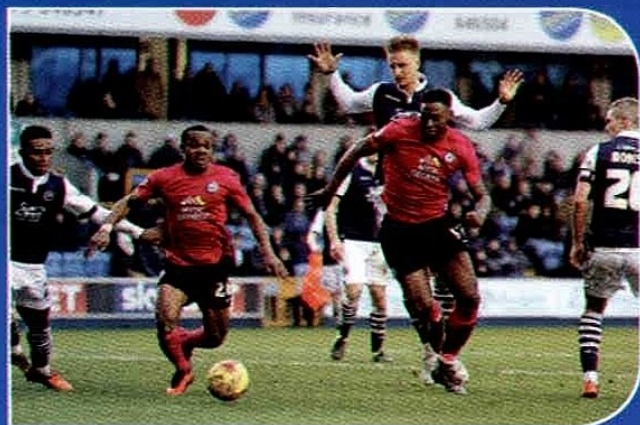
Visit **[www.gputc.com/2016](http://www.gputc.com/2016)** to register your interest

f **@greaterpeterboroughutc**

t **@gputc**



# HALF-TIME FUN



## SPOT THE DIFFERENCE

Can you find the 5 differences in the pictures above?

## WORDSEARCH

Can you find these hidden current Posh and Swindon Town players?

C	O	U	L	I	B	A	L	Y	L	F	V
O	D	J	A	L	N	W	I	C	K	B	I
U	K	E	Z	T	H	U	E	R	X	J	G
L	L	S	R	L	O	A	Y	D	M	F	O
T	L	G	W	E	S	J	K	H	U	S	U
H	U	M	I	Y	T	O	R	E	A	L	R
I	B	J	V	M	I	S	A	K	Y	X	O
R	N	A	R	I	L	E	E	I	D	B	U
S	R	P	Z	G	O	W	C	R	T	M	X
T	U	N	K	A	T	H	U	N	R	S	C
V	T	J	E	C	N	A	K	I	B	O	F
B	A	L	D	W	I	N	G	X	K	A	F



Your Score

Alnwick  
Baldwin  
Forrester  
Coulthirst  
Coulibaly

Vigouroux  
Turnbull  
Kasim  
Ajose  
Obika



Your Score



## FIND THE CARROT

Posh mascot Peter Burrow has lost his carrot somewhere throughout this programme! Can you help him find it? Write which page number it is on in the box. There are five points up for grabs!



Page



Your Score



# Presenting the all-new GLC. Opening doors to a new segment.



Official government fuel consumption figures in mpg (litres per 100km) for the GLC range: urban 51.4(5.5), extra urban 60.1(4.7), combined 56.5(5.0). CO<sub>2</sub> emissions 129 g/km. Official EU regulated test data are provided for comparison purposes and actual performance will depend on driving style, road conditions and other non-technical factors.

Brand new to the Mercedes-Benz portfolio, we present the new generation of SUV. With an extensive range of technologies, a combination of advanced four-cylinder engines and 4MATIC permanent all-wheel-drive, the new GLC ensures a powerful, dynamic driving experience – whatever the terrain.

And from just £399\* per month it's perfectly affordable too. Offer ends 31 March 2016.

## Representative example

GLC 220 d 4MATIC SE automatic including metallic paint

36 monthly payments of* (Term of agreement)	<b>£359.00</b>
On-the-road price	<b>£35,595.00</b>
Customer deposit	<b>£5,825.20</b>
Retailer deposit contribution	<b>£0.00</b>
Optional purchase payment†	<b>£21,700.00</b>
Amount of credit	<b>£30,097.39</b>
Total amount payable‡	<b>£40,131.61</b>
Purchase activation fee¹	<b>£10.00</b>
Representative APR	<b>6.4%</b>
Fixed interest rate	<b>6.23%</b>

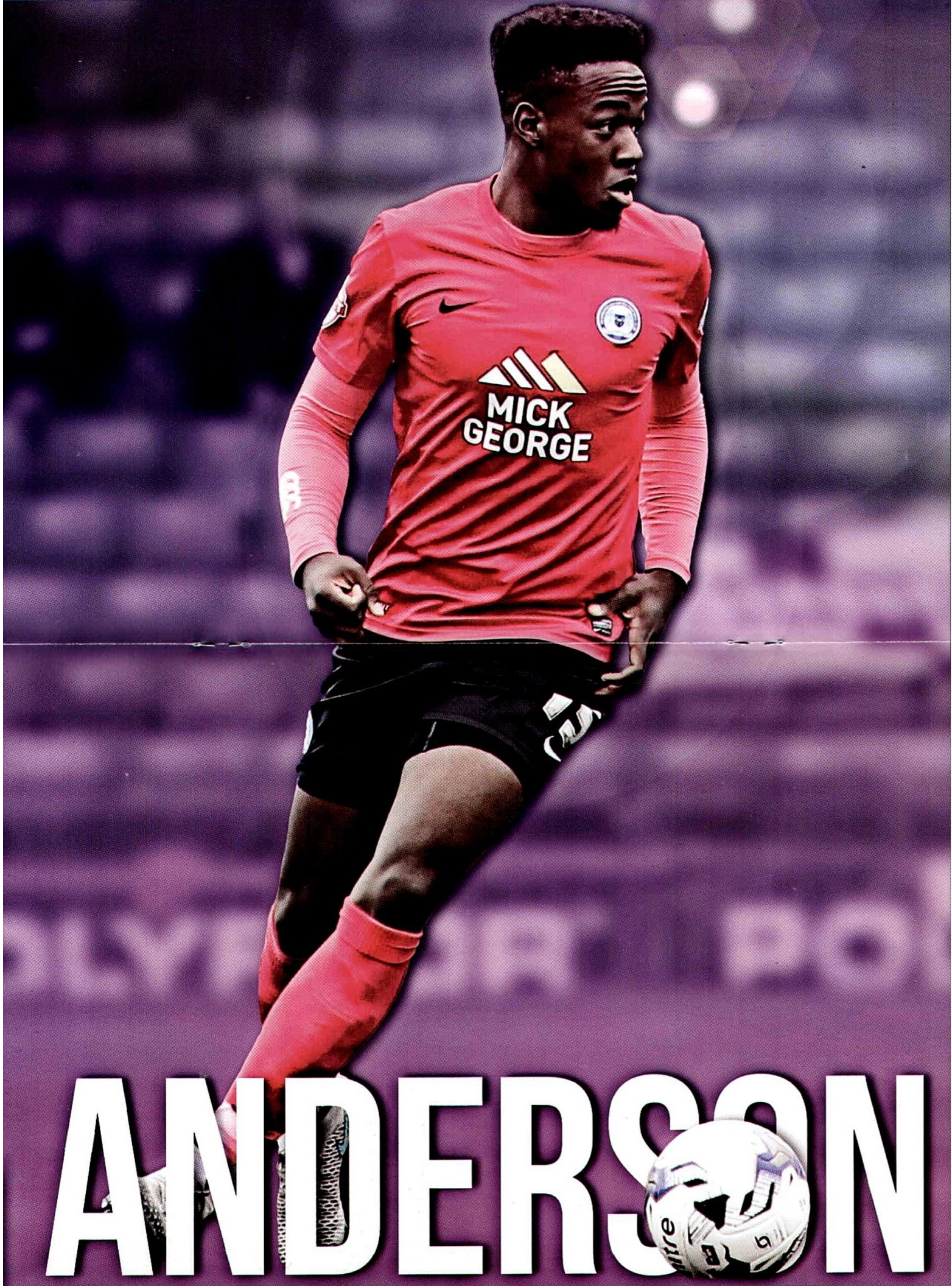
Whilst this offer is only available through Mercedes-Benz Finance, we do arrange finance on behalf of other finance companies as well. Model featured is a new Mercedes-Benz GLC 220 d 4MATIC at £35,595 on-the-road including optional metallic paint at £645 (on-the-road price includes VAT, delivery, 12 months' Road Fund Licence, number plates, first registration fee and fuel). \*Finance offer based on a new GLC 220 d 4MATIC SE with metallic paint on a Mercedes-Benz Agility Agreement, on 10,000 miles per annum. Excess mileage charges may apply. †Payable if you exercise the option to purchase the car. ‡Includes optional purchase payment, purchase activation fee and retailer deposit contribution. Orders/credit approvals on selected GLC models between 1 January and 31 March 2016, registered by 30 June 2016. Guarantees and indemnities may be required. Offers cannot be used in conjunction with any other offer. Some combinations of features/options may not be available. Please contact your retailer for availability. Terms and conditions apply. Credit approval subject to status by Mercedes-Benz Financial Services UK Limited, MK15 8BA. Prices correct at time of going to print.

Mercedes-Benz



Mercedes-Benz of Peterborough Club Way, Cygnet Park, Hampton, Peterborough, PE7 8JA  
01733 294900 [www.mercedes-benzofpeterborough.co.uk](http://www.mercedes-benzofpeterborough.co.uk)





ANDERSON



# OPEN TO ADVENTURE.



## THE MINI HATCH RANGE.

For all your MINI needs, or to book a test drive\* call 01733 707074  
or visit [www.sycamoremini.co.uk](http://www.sycamoremini.co.uk)

### SYCAMORE (PETERBOROUGH) LTD

Papyrus Road, Werrington

Peterborough PE4 5HW

01733 707074 [www.sycamoremini.co.uk](http://www.sycamoremini.co.uk)



Official Fuel Economy Figures for the MINI Hatch Range: Urban 31.0-72.4 mpg (9.1-3.9 l/100km). Extra Urban 54.3-91.1 mpg (5.2-3.1 l/100km). Combined 42.2-83.1 mpg (6.7-3.4 l/100km). CO<sub>2</sub> Emissions 155-89 g/km. Figures may vary depending on driving styles and conditions.

\*Test drive subject to applicant status and availability.



# HALF-TIME FUN



## SPOT THE BALL

Can you spot the correct football in this action shot?



Your Score

## CONNECTION

Can you connect the League One team to their club badge? There are two points on offer for each correct answer.

ROCHDALE



CREWE



WALSALL



## GUESS WHO

Can you name this Posh player for two points?



Your Score



Your Score



Total Score

## TODAY'S MASCOTS



Name: SHAYLA GREENWAY

Age: 12

Hobbies: Horse Riding & Reading

Favourite Player(s): All of them!

Match Prediction: 2-1 to Posh



Name: TOM FREEMAN

Age: 7

Hobbies: Playing Football, Drawing & Music

Favourite Player(s): Jonathan Obika

Match Prediction: 2-1 to Swindon



Name: JACK FREEMAN

Age: 10

Hobbies: Playing Rugby & Watching Swindon

Favourite Player(s): Jonathan Obika

Match Prediction: 3-2 to Swindon



# FUN DAYS SET FOR EASTER HOLIDAYS

**T**he February school half term break saw a busy week for the Foundation coaches running the school holiday fun day courses.

The popular Hampton fun days saw huge numbers attend, with record amounts of children attending the three day course in Hampton. Attendance numbers rose to 120 children on one day, including 16 girls attending the girls only session.

On the Tuesday the children were thankful to Jack Baldwin who came down to the Hampton venue to sign autographs for all of the young players. Wednesday again saw high numbers with the day concluding with certificate presentations.

The end of the week saw the fun days being run for two days at the Neale Wade School in March. Numbers were again excellent with over 50 children attending each day.

The Easter holidays will see us run fun days again at Hampton and March, along with days at Werrington. We are pleased to announce that we will run fun days at a new venue for us in Stamford, at the new Stamford AFC ground.

Participants of all abilities, aged between 4 and 12, will receive a variety of fun-based football activities, led by FA and UEFA qualified coaches. Players will be involved in tournament matches each afternoon.

The details for each fun day session being held in the Easter holidays are;

**Venue** - Hampton Community Sports Association,

Beaumont Way, Hampton Hargate, PE7 8DN.

**Dates** - Tuesday 29th March, Wednesday 30th March and Thursday 31st March.

**Venue** - Neale Wade Sports Centre, Wimblington Road, March, PE15 9PX.

**Dates** - Thursday 31st March and Friday 1st April.

**Venue** - Werrington Leisure Centre, Staniland Way, Werrington, PE4 6JT.

**Dates** - Monday 4th April, Tuesday 5th April and Wednesday 6th April.

**Venue** - Stamford AFC, Borderville Sports Centre, Ryhall Road, Stamford, PE9 1US.

**Dates** - Thursday 7th April and Friday 8th April.

Booking forms are available from [www.theposh.com](http://www.theposh.com) website or by emailing [foundation@theposh.com](mailto:foundation@theposh.com).



Jack Baldwin signing autographs at the half-term fun days.



# BGL is proud to sponsor the Posh Foundation and Football in the Community

Visit our job site: [jobs.bglgroup.co.uk](http://jobs.bglgroup.co.uk)



**budget**  
insurance

**comparethe**  
market.com

dialdirect

**fusion**  
CONTACT CENTRE SERVICES

 JUNCTION

**b g l**  
group

**LesFurets.com**  
Compagnie de services FFR

**hoyhoy.nl**

**minster** law



Deon Moore celebrates his goal  
with Hugh Alban-Jones.



## YOUTH ALLIANCE U18 SOUTH EAST FIXTURES

Sat 8 Aug	Stevenage (a)	<b>L 3-1</b>
Sat 15 Aug	Luton Town (h)	<b>L 3-1</b>
Wed 19 Aug	Gillingham (h) 12.30am	<b>W 1-0</b>
Sat 22 Aug	AFC Wimbledon (h)	<b>L 4-0</b>
Sat 29 Aug	Northampton Town (h)	<b>L 2-0</b>
Sat 5 Sep	Leyton Orient (a)	<b>L 4-0</b>
Sat 12 Sep	Cambridge United (h)	<b>D 0-0</b>
Sat 19 Sep	Southend United (h)	<b>L 3-1</b>
Sat 26 Sep	Dagenham & Redbridge (a)	<b>L 4-2</b>
Sat 3 Oct	Barnet (a)	<b>W 1-0</b>
Sat 10 Oct	Milton Keynes Dons (h)	<b>W 2-0</b>
Sat 17 Oct	Luton Town (a)	<b>L 4-1</b>
Sat 24 Oct	Stevenage (h)	<b>L 5-2</b>
Sat 7 Nov	Gillingham (a)	<b>L 5-1</b>
Sat 14 Nov	AFC Wimbledon (a)	<b>W 3-2</b>
Sat 21 Nov	Northampton Town (a)	<b>W 3-1</b>
Sat 5 Dec	Leyton Orient (h)	<b>D 2-2</b>
Tue 8 Dec	Southend United (a)	<b>W 4-2</b>
Sat 12 Dec	Cambridge United (a)	<b>L 8-4</b>
Fri 8 Jan	Dagenham & Redbridge (h)	<b>L 5-4</b>
Sat 16 Jan	Milton Keynes Dons (a)	<b>L 3-2</b>
Sat 23 Jan	Barnet (h)	<b>W 2-0</b>

## U18 MERIT LEAGUE FIXTURES

Sat 6 Feb	Dagenham & Redbridge (h)	<b>W 4-0</b>
Sat 20 Feb	Oxford United (h)	<b>L 4-1</b>
Sat 27 Feb	Cambridge United (a)	
Sat 5 Mar	Newport County (h) 12pm	
Sat 12 Mar	Northampton Town (a)	
Sat 19 Mar	Stevenage (h)	
Sat 26 Mar	Swindon Town (a)	
Tue 5 Apr	Bristol Rovers (h) 2pm	
Sat 16 Apr	MK Dons (a)	
Sat 23 Apr	Yeovil Town (a)	

Home games kick-off at 11am and take place at  
the Nene Park Academy Training Ground.

# UNDER 18S REACH CUP FINAL

**T**he Peterborough United under 18s moved into the final of the David Joyce Cup after a comfortable 2-0 success at Peterborough Northern Star on Wednesday evening with Jack Collison's men scoring twice after the break to progress into the final.

On a difficult surface, both sides performed admirably in the first half and created a number of opportunities with Deon Moore denied by the goalkeeper and Cameron Stump also going close in the early exchanges.

Posh goalkeeper Dion-Curtis Henry was a spectator in the main during the first period but after the break was called upon to make one or two saves. Posh found the breakthrough midway through the second half as Moore headed home a Stump cross from the left.



Deon Moore heads in the opening goal.





University Centre  
Peterborough



## Come and study with us!

- We offer excellent employer links and graduate opportunities.
- Competitive fees for degree programmes.
- Bursaries to support your academic development.
- We have a 92% satisfaction rate according to the National Student Survey\*
- 100% of Engineering graduates are currently in full time employment or postgraduate study.

\*for BSc (Hons) Computing and Information Systems and Ba (Hons) Journalism.

*'We engage, enable and empower students to meet the challenges of the future'*



Find us at:

e: [ucpenquiries@anglia.ac.uk](mailto:ucpenquiries@anglia.ac.uk)

t: 01223 69 5750

Park Crescent Campus,  
Peterborough, PE1 4DZ





Kasey Douglas celebrates scoring his goal.



Cameron Gow tracks his man.

Moore was denied a second after demonstrating excellent pace to get himself into the box, the Star goalkeeper producing a fine stop by his near post. Posh doubled the lead when substitute Kasey Douglas fired home from the edge of the area via the underside of the crossbar.

Posh introduced Harry Baudry and Leonardo Da Silva Lopes during the second half, but Collison's men were always comfortable in possession and controlled large periods of the

second period to secure a berth in the final.

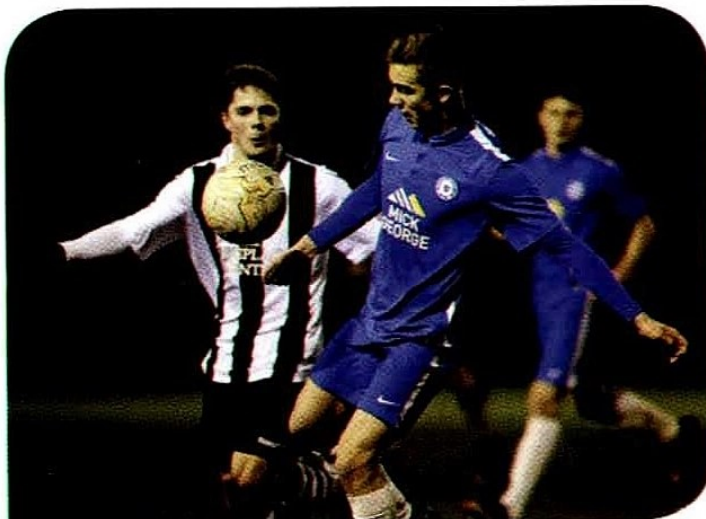
Boss Collison said: "I was impressed with the lads, it was a good performance. In the first half, Northern Star made it difficult for us as we expected but the boys worked hard to stop them playing and got their rewards in the second half.

"We had a young side out, it was a good opportunity for some of the first years to show what they could do and they performed well. We

now need to take that into the league programme which starts Saturday when we face Cambridge United.

"Finally, I would like to thank everybody at Peterborough Northern Star for making us very welcome. The hospitality was first class and we wish them the very best of luck for the rest of the season," Collison concluded.

**Posh:** Henry, Ferrier, Piesse, Cartwright, Connor, Alban-Jones, Jarvis, Noble, Gow, Stump, Moore.



Danny Jarvis keeps his eye on the ball.



Luke Noble brings the ball forward.



**S**tephenson Smart was established over 100 years ago. We continue to build on our enviable reputation for providing excellent advice and first class service to our business and personal clients alike.

We have many clients in the local community and service businesses, small and large, across many sectors including manufacturing, agriculture, retail, service sector, construction, contractor companies and charities and not-for-profit organisations.

As well as general accountancy, audit and tax skills, our 6 Partners also have individual specialist skills which enables us to provide clients with a first class service as and when required. With our wealth of experience we pride ourselves on delivering an unparalleled service to all clients, whatever their size or sector.

In addition to auditing, accounting and tax services we also provide advice on how to improve and develop your business. Whether you need an integrated business strategy, access to corporate finance or specialist tax advice we are here to help you achieve your goals.

If you would like to discuss any of your business or personal requirements we would be delighted to hear from you.



**STEPHENSON  
SMART**

CHARTERED ACCOUNTANTS

36 Tyndall Court  
Commerce Road  
Lynchwood  
Peterborough PE2 6LR  
(01733) 343275  
[www.stephensonsmart.com](http://www.stephensonsmart.com)

raising funds for  
**action medical research**  
for children

## THE PERFECT CHIP SHOT



Charity reg. nos 208701 and SC039284

Event sponsors



## Charity Poker Night

4th March 2016

Peterborough Marriott Hotel  
Lynch Wood, Peterborough, PE2 6GB

We are upping the ante  
for the charity!

- Three Casino gaming tables
- Poker Tournament with a guaranteed pot of £600!
- Running Buffet from 8.00-10.00pm.

6.30pm Arrival and Poker Learning table prior to Poker tournament start at 7.00pm Tables close 12.00 midnight. Bar closes 1.00am.

For details, call 01733 244 273 or visit  
[www.amr-peterborough.co.uk](http://www.amr-peterborough.co.uk)





Match Sponsor



Match Ball Sponsor



Programme Sponsor



Associate Sponsor

# WELCOME TO OUR SPONSORS

**G**ood afternoon and welcome back to the ABAX Stadium for our Sky Bet League One fixture against Swindon Town. Today we welcome guests from Ridgeons as our match sponsors. Ridgeons are the area's largest Independent Builders Merchant with branches locally in March and at Fengate, Peterborough.

They have a total of 26 branches around the Eastern Counties supplying a full range of materials, tools and accessories to build, maintain and improve properties. Their branches have the highest stocks of Building Materials, Timber, Tools, Paint, Kitchens and Bathrooms, supplying both the trade and DIY. The branch network continues to expand and they recently announced the opening of four new branches at Royston, Bedford, St Ives and St Neots.

We are also pleased to welcome back guests from Nene Park Golf Club as our match ball sponsors. Everyone is welcome at Thorpe Wood and Orton Meadows. The beautiful surroundings, challenging golf courses and informal atmosphere all combine to make you feel relaxed and welcome. They offer what you would expect from any private golf club, but in a completely open style and with facilities at both sites. Enjoy the views of the beautiful golf courses at either The Granary or The Woodman, or come and browse around the American Golf Store. Whether you want to play golf, learn golf or as yet have no interest in golf at all, they are sure that once you know they're here, you'll keep coming back for more.

We also welcome guests from ASL as our programme sponsors today. ASL are one of the UK's leading independent document resellers, supplying and managing print, copy & scan solutions from world leading manufacturers. The company is based in Cambridge, with offices in the Midlands, London and Milton Keynes employing 100 staff and looking after around 5000 customers across the UK. For more information, call 0845 207 7000 or visit [www.asl-group.co.uk](http://www.asl-group.co.uk).

ASL have been working with Peterborough United Football Club for over 10 years, providing a range of copy and print solutions across all areas, from the youth and community department through to the manager's office. With the opening of a new training ground, Peterborough United and ASL worked together on an updated managed print and support solution to enable all the departments to benefit from the latest technology.

We are also pleased to welcome Stephenson Smart back to the ABAX Stadium as our associate sponsors. We also welcome Stephenson Smart as our match ball sponsors for today's game. Stephenson Smart & Co are chartered accountants and business advisors based in Peterborough, and are the football clubs official accountants and proud sponsors of our official website [www.theposh.com](http://www.theposh.com).

## EXECUTIVE BOX HOLDERS

5a	4a	3a
	Proctor Construction P.J. THORP LTD.	VOCAL GROUP mechanical & electrical installations specialists
2a	1a	0
 gpprint	ABAX	N&P NORWICH & PETERBOROUGH BUILDING SOCIETY
1	2	3
SWITCH Financial Wholesale Lenders	Perkins	EDWARDS & KELCEY ELECTRICAL JVL Specialist Electrical Ltd for 20 years
4	5	6
 HOTTENROD MEGAPLAN	BRANCH BROS	News UK
7	8	8
MICK GEORGE SKIPS <a href="http://www.mickgeorge.co.uk">www.mickgeorge.co.uk</a>	McINTYRE ELECTRICAL LTD <a href="http://www.mcmintyre-electrical.co.uk">www.mcmintyre-electrical.co.uk</a> fisher group	DALROD calmahaby hair styling
9	10	11
YOURS <a href="http://www.yoursoffice.co.uk">www.yoursoffice.co.uk</a>	John Hings Electrical SOVEREIGN Installation Services LTD	networkwaste the green waste recycling company
12	13	14
fusion CONTACT CENTRE SERVICES	EPD [WHITTLESEY]	Vital RECRUITMENT

## CLUB 75

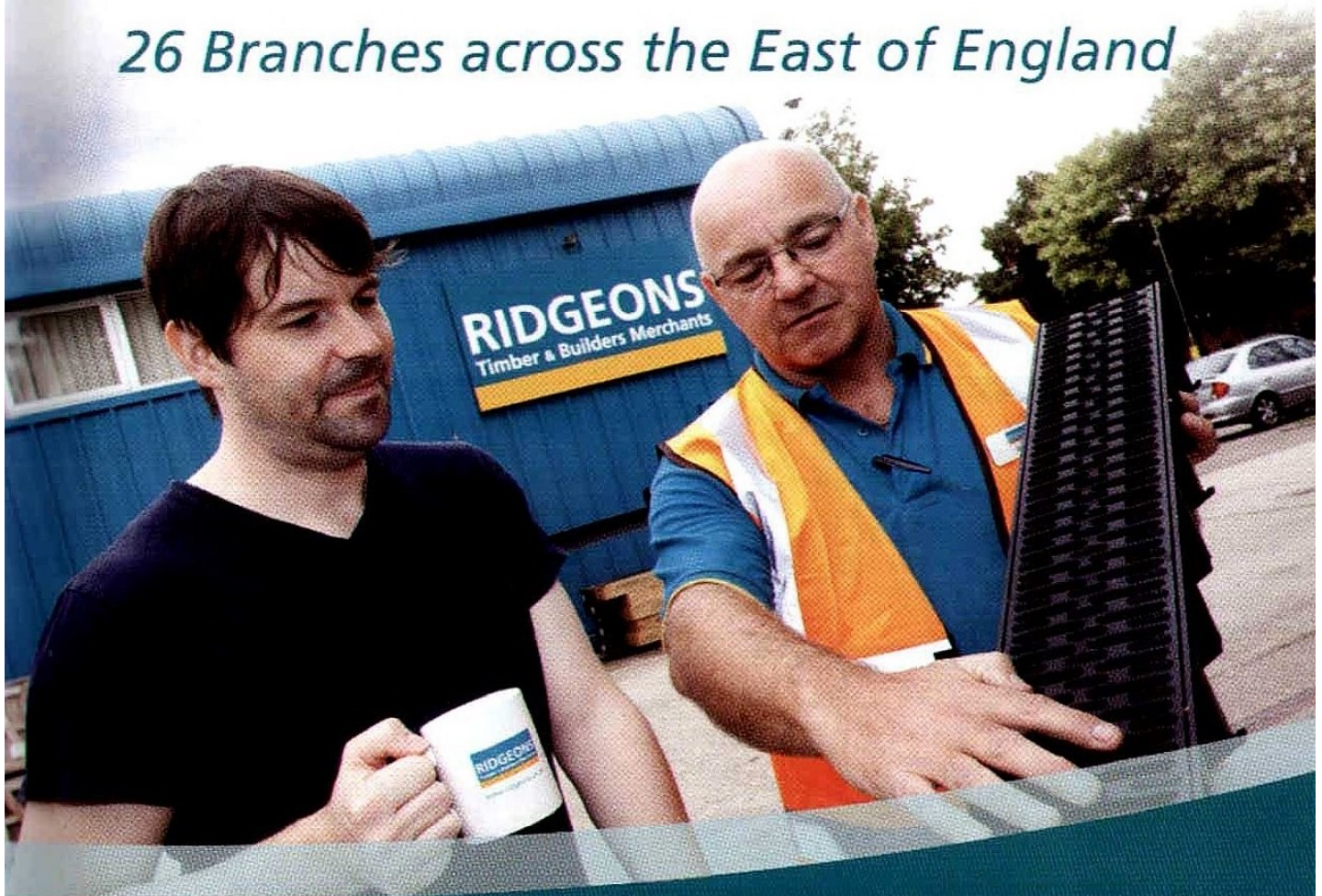


# RIDGEONS

Timber & builders merchants

- ✓ Quality products
- ✓ Knowledge and advice
- ✓ Range and depth of stock

*26 Branches across the East of England*



**Peterborough**  
6 Whitehead Drove  
Fengate, PE1 5BF

**Tel: 01733 207820**



[www.ridgeons.co.uk](http://www.ridgeons.co.uk)



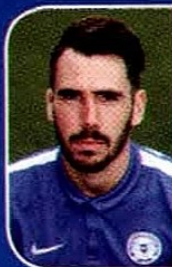
# KIT SPONSORS



BEN ALNWICK



HOME & AWAY



MICHAEL SMITH

Glenda Wells  
& Bob Symms

*gbs*

HOME & AWAY



KGOSI NTLHE

**PREMIER**  
01733 340400

**Schoffields**  
Posh Official Dry Cleaners  
01733 233501  
www.schoffields.com

HOME

AWAY



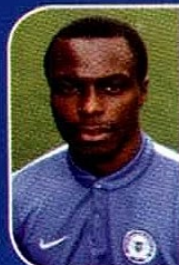
CHRIS FORRESTER



HOME



AWAY



GABRIEL ZAKWANI

**foreverposh**

**STEVE  
& MO**

HOME

AWAY



JACK BALDWIN



HOME

*Grace Weston*  
**CLEANING SERVICES**  
01733 241965 07749 053216

AWAY



JON TAYLOR



HOME



AWAY



MICHAEL BOSTWICK



HOME

**foreverposh**

AWAY



LEONARDO DA SILVA LOPES

**Barry and Kirstine  
Fry**

HOME & AWAY



ERHUN OZTUMER

**PAUL  
CYCLOPS**

HOME



AWAY



MARCUS MADDISON

**Peterborough  
Tyre & Battery**  
**P.T.B. Tyre Sales**

HOME & AWAY



RICARDO ALMEIDA SANTOS



*Loving football  
helping kids*

HOME

Simply Roofline Ltd

01733 349899

AWAY





DIDON-CURTIS HENRY

foreverposh

HOME

AWAY



HARRY TOFFOLD

**Peterborough  
Tyre & Battery**  
P.T.B. Tyre Sales

HOME & AWAY



SHAQUILE COULTHIRST

**Peterborough  
Tyre & Battery**  
P.T.B. Tyre Sales

HOME & AWAY



JERMAINE ANDERSON

foreverposh

HOME

Jon Hibbins  
EmPower  
Solutions  
07766 168659

AWAY



HARRY BEAUTYMAN



HOME & AWAY



ANDREW FOX

foreverposh

HOME



AWAY



MARTIN SAMUELSEN



Rosanna &  
Laura Di Cesare

HOME

AWAY



HARRY ANDERSON

John Hings  
Electrical  
01733 752050

HOME



AWAY



TOM NICHOLS

Somerset  
Posh

HOME & AWAY

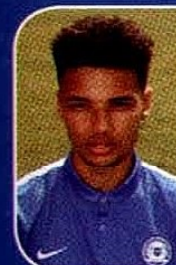


ADIL NABI



HOME

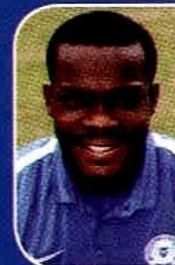
AWAY



LEE ANGOL

Mike and Tricia  
Lewin

HOME & AWAY



SOULEYMANE COULIBALY

Alf Hand

HOME



AWAY



JACK COLLISON



Loving football  
helping kids

HOME

AWAY



GRANT McCANN

**Peterborough  
Tyre & Battery**  
P.T.B. Tyre Sales



George Stafford



Ellis Stafford



## LIFE IN THE POSH LANE

The First Midland League Championship (1955/56)

by PETER LANE

# A GOOD FRIDAY

**F**enland neighbours Wisbech Town, were our next opponents at London Road on Good Friday, 30th March 1956. Posh were still without the injured Norman Rigby, therefore Ray Barr continued at centre-half. After 15 minutes into the game centre-forward Andy Donaldson's shot put Posh into the lead, but only five minutes later suffered a serious blow when right winger Billy Hails was carried off.

Then hopes were raised when we won a penalty, but dashed again when George Hair's kick was well saved by Scott. Meanwhile Donaldson had dropped back to help his defenders as Posh, at this point, were more than holding their own with just ten men.

Two minutes after the break Wisbech equalised and began to take advantage, but shortly Posh regained more of the play again and within just three minutes Hair redeemed himself by scoring a cracker. With

only minutes remaining, a wonderful turn on the edge of the box from Dennis Emery saw him score a beauty to settle this issue.

**Result:** Posh 3-1 Wisbech Town  
**Scorers:** Posh: Donaldson (15), Hair (50), Emery (85);

**Posh:** Lowery, Stafford G, Killin, Shaw, Barr, Stafford E, Hails, Emery, Donaldson, Gibson, Hair.

**Attendance:** 10,986.

The following afternoon Posh entertained Bradford Park Avenue (Reserves), Des Farrow returned in the side replacing Ellis Stafford, whilst Don Robertson played on the right wing for the injured Billy Hails.

The conditions did not suit Posh, with very strong winds and a hard ground. Bradford proved a difficult side to beat, with a dour defence and unphased by our reputation. Like in the previous match in Yorkshire where Posh narrowly won 4-3 we

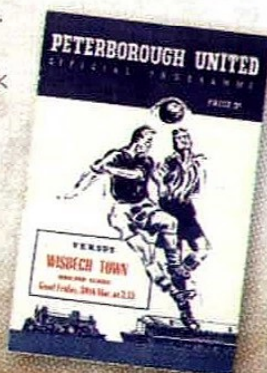
had to fight all the way to obtain both points and this was due to a brilliant self-made goal from Andy Donaldson after 12 minutes, before a crowd of 8,715. So within just two consecutive days London Road attracted a total of 19,701 fans!

**Result:** Posh 1-0 Bradford Park Ave Res.

**Scorer:** Posh: Donaldson (12);  
**Posh:** Lowery, Stafford G, Killin, Shaw, Barr, Farrow, Robertson, Emery, Donaldson, Gibson, Hair.  
**Attendance:** 8,715.

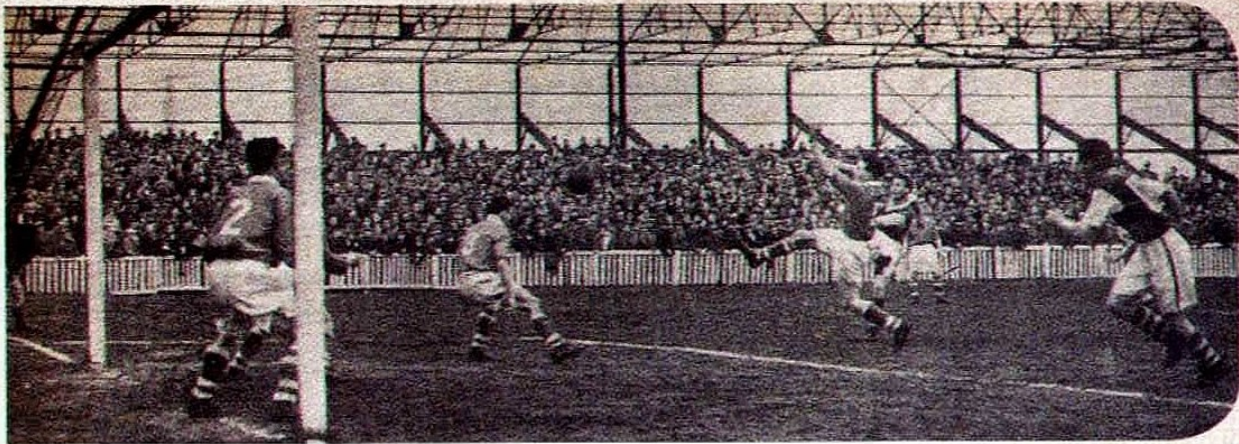
On Easter Monday 2nd April 1956 (three games over the holiday period); it was the return match with Wisbech Town. Like the two previous matches, once again conditions were difficult on a bone hard pitch. Wisbech had just gained a surprise victory away to Notts County two days previously as Posh expected a tough match.

Manager George Swindin made two changes by playing Jimmy Longworth for Don Robertson and Ellis Stafford replacing Des Farrow. Peterborough





Dennis Emery scoring for Posh against Wisbech.



Andy Donaldson scoring the first goal against Wisbech.



Don Robertson (left) in action for Posh against Bradford.

got off to a good start with Bob Gibson scoring a grand header on 15 minutes.

Ten minutes followed with a good centre from George Hair allowing Dennis Emery to convert. Posh were now well on top with the forwards showing great form, but against the run of play Wisbech were awarded a dubious penalty with Grant scoring on 30 minutes. This was followed with Jerry Lowery saving well from a header. Up to this point he had very little to do.

After the interval Posh were still on top and scored twice within six minutes, first from Hair then one from Andy Donaldson. Leading up to Andy's goal it was rather unfortunate for Wisbech when one of their players collided with the

Referee and fell to the ground when Andy scored, but the Wisbech protests were in vain. After this our forwards understandably began to tire and Wisbech began to get on top and Grant scored his second goal on 73 minutes. Posh then held on with the defence providing cover for goalkeeper Lowery who was then rarely troubled.

So the game ended with Posh gaining maximum points over the Easter period, leaving us on top of the League. Also Posh became the only Club in the Country at the time to score over 100 League goals.

**Result:** Wisbech Town 2-4 Posh



**Scorers: Posh:** Gibson (15), Emery (25), Hair (51), Donaldson (57); **Wisbech:** Grant (30 pen, 73).

**Posh:** Lowery, Stafford G, Killin, Shaw, Barr, Stafford E, Longworth, Emery, Donaldson, Gibson, Hair.  
**Attendance:** 6,758.

Meanwhile the Peterborough Reserve side competing in the Eastern Counties League also won its three games over Easter by winning 2-0 away to Eynesbury Rovers 1-0 at Yarmouth and 9-1 at home to Eynesbury, leaving them also top of the League and almost 4,000 attended this game – a great achievement by Peterborough United.

'Up The Posh' – Pete.





Stephen and Michael pictured after their father George Hair was inducted into the Posh Hall of Fame.

# THE INTERVIEW

by Peter Lane



**A**s part of George Hair's recent induction into the Posh Hall of Fame, Club Historian Peter Lane caught up with Michael and Stephen to talk about their late father George Hair.

**Q.** Did your father ever speak about his ambitions on his early days at London Road?

**A.** "Dad didn't really speak about his ambition, but we knew he loved his football and the fact he ended up at Peterborough was wonderful. Also he was part of the Bosman Rule, which meant he had to go part-time and I think that is why a lot of players ended up here. The Club had got the ambition but because they weren't automatically voted into the league they had to wait about five years for that to

get into the league. The Bosman Rule was that players didn't have a contract in those days and someone else i.e. Grimsby held his signature, which meant the only way Dad could earn a living was to come out of full-time playing into part-time until his contract was finished. Dad was fortunate because prior to signing for Newcastle he had served his apprenticeship at Vicars Armstrongs as a fitter/turner which meant he could get an actual job, so he also worked at Perkins then Brotherhoods once he was here in Peterborough. When Dad was about 14 Newcastle wanted to sign him but his Dad said "You don't get any money in football so you need to get a proper job!", but the day he qualified from his apprenticeship was the day he signed for Newcastle."

**Q.** What was it like to have a footballing father?

**A.** "Well everything we ever did was sport connected. He loved football, cricket, golf. Our lives evolved around sport and Mum had to just accept it, after all she married a sportsman!"

**Q.** Did you as a family have a favourite holiday destination?

**A.** Both Steve and Michael agreed "The only holiday destinations were Newcastle! This was at Grandma's house, we only ever knew one Grandma as our other grandparents had died before we really knew them."

**Q.** Did your father have any favourite food?

**A.** "Pretty much a traditionalist but he also always liked

George Hair



# HALL OF FAME

George Hair scoring for Posh against Ipswich Town.



tripe and he would demolish a pigs trotter. Dad was brilliant at picking a chicken and a turkey so there was only the bones left! He would say we were the only family to have a chicken with four legs!! (he would have the legs and we brothers would have the wings, well as we thought small legs!!)"

**Q.** What was your father like as a family man?

**A.** "He was a family man, he would do everything for us and later on I realised he also would do everything for everyone else, especially young kids playing football if their parents couldn't take them to a game he would travel 30 miles or so to transport them to and fro. He lost a bit of interest when he was involved in the local youth football but he got it back."

**Q.** What were his other interests or did he have time for any?

**A.** "He was actually interested in several things, but he would get his scrapbook out from when he played cricket at Vickers Armstrong,

he also played cricket when he came to Peterborough and was Captain of Mitchells in the early days. This is when the story of his contact lenses came about, because when he was at Newcastle he couldn't wear them for footballing but could when he played cricket. In fact they were the same ones he had from the early days which Newcastle had bought him, they had sent him to Harley Street, London to an eye specialist in the 1940's to have his eyes tested, once he received his contact lenses they asked him to walk around London to see how they were and he got on fine with them. We do still have the actual pair."

**Q.** Would you know where he enjoyed his football the most?

**A.** "That's a difficult one to answer he made a comment once that he enjoyed his football all over, from playing as a 14 year old, then at Manchester City, then with Spenymoor Juniors where Newcastle bought him from, when they donated £5. He enjoyed it wherever he played, but he always



**Name:** George Hair  
**D.O.B:** 28/04/1925  
**Place of Birth:** Crawcrook, Newcastle

**1946-48:** Newcastle United  
**23 appearances, 7 goals.**

**1948-50:** Grimsby Town  
**68 appearances, 9 goals.**

**1951-56:** Peterborough United

**185 appearances, 43 goals.**





George Hair pictured coming out of the Posh tunnel in the Main Stand.

said he made the most money when playing at Boston, he didn't have a car and went to games on his motorbike!"

Q. Who was his most admired



George's contact lenses which he could only wear for two hours at a time, supplied from a Harley Street specialist.

player/players – did he ever mention them?

A. "Tom Finney, he always said he was his favourite player. He would always say to me Stanley Matthews had one foot but Tom Finney had two."

Q. Did he ever share his best footballing moment with you?

A. "He loved telling stories, but not particularly about the games but

about what happened on the way to or from a game etc. The one that sticks in my mind was going on the train to the away matches especially in London when the wives could go. They would go down on a Friday night and say go to a show, they would play Saturday then go to another show on the Saturday night and come back on Sunday, this was part of the deal. Of course on the way down on the Friday night having a meal on the train Jackie Milburn always made sure he sat near Mum and Dad, and would say "Audrey you will order a gin and tonic, I will order your lemonade, we will then switch." So by the time they got to London Jackie Milburn had drunk about 4 gin and tonics and was well happy and Mum was sober with her lemonade! He used to say to Mum, you need to drink that lemonade a bit quicker!"

Q. Have you any recollections of his retirement from the game?

A. "The retirement from the game for us to remember was

Somersham, when he finished.

Michael was then 16 and was lucky enough to play at the same time as Dad. Michael was Left-back and Dad was Left-wing, also playing was Eric Robinson who was a very good player in his day. Michael chipped the ball for Dad to run on to who then later complained quite verbally about this pass not being suitable, but Eric Robinson piped up and said "now then George there was nothing wrong with that pass, if you are not good enough to receive it then don't complain." So he retired soon after that; he did only play that night because two lads who should have played were involved in a car accident on the way."

Q. Your happiest memories of your Dad?

A. "Apart from our happy childhood, in his later life he just loved his Sunday lunch and having a drink at the local and chatting with folk. We also remember when we had just moved to Oakdale Avenue and Dad was waiting at the bus stop in Fletton Avenue and a Police





# Looking for a new career?



**We have self-employed driver opportunities – no experience necessary!**

Operating from our Peterborough Depot

Net earnings c. **£30,000**

**We have fantastic opportunities for you to run your own business and be part of the UK's favourite parcel delivery company.**

At DPD, our continuing growth means we now need more drivers and if you are passionate about delivering a great customer experience, and want to be well rewarded for working hard; we want to talk to you!

Our low cost entry from £1,300 means there really is nothing to stop you becoming your own boss.

**If you:**

- Are over 21 years of age
- Have held a full UK driving licence for at least 12 months
- Have a desire to run your own business

**Call Paul Snapes on 07920 073284 for more information.**

[www.dpd.co.uk/owner-drivers](http://www.dpd.co.uk/owner-drivers)





Hair scoring for Posh in a 3-1 FA Cup win over Ipswich Town in 1955.

car pulled up, they said "jump in George we will give you a lift home!" That was his only time in a Police car thankfully...

**Q.** Have either of you any other short stories you wish to share?

**A.** "Steve recalled when his boys were young lads and had received football kits for Christmas, so Dad and the boys decided they would play up the hall because it was raining. The boys donned their kits which had names on the back of famous players, one of them

said to Dad "who are you going to be?" Dad replied "George Hair", they said "no you have to be someone famous! We all just laughed."

Both Michael and Steve said they were very proud of their father and never heard a bad word said about him, he was an architectural left winger and great crosser of the ball. Both Michael and Steve were keen sportsmen in their younger days, Michael was a defender but got injured so became a referee, Steve also played as a full-back for a time but then enjoyed his cricket.



George Hair (pictured right) with Andy Donaldson during their time at Newcastle United.



Hair (pictured bottom right) after Posh had won the Bancroft Cup after an aggregate win of 9-3 over Wistich.





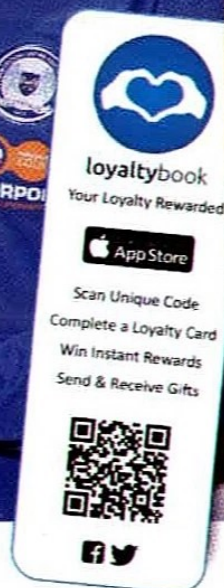
loyaltybook

# YOUR LOYALTY, REWARDED

1. Download Loyaltybook
2. Add The Posh
3. Purchase any Meal Deal and receive a token
4. Scan the unique code for a chance to win Posh prizes
5. After collecting 6 stamps be rewarded & refreshed with a hot or cold drink

**NET YOURSELF A CHANCE TO HAVE YOUR PICTURE TAKEN  
WITH YOUR FAVOURITE PLAYER WITH THE LOYALTYBOOK APP**

Download the app...



# STRIKE THE DEAL!

## ON CAR, VAN & TRUCK HIRE

# GLOBAL SELF DRIVE!

**WWW.GLOBALSELFDRIVE.COM**

**TEL: 01733 459972**





# DO YOU WANT TO PLAY AT THE ABAX STADIUM?

**G**eorge Boyd, Jimmy Bullard, Simon Davies, Dwight Gayle, Lee Tomlin, Craig Mackail-Smith, Britt Assombalonga - they have all played and scored at the ABAX Stadium and we are giving you a chance to follow in their footsteps, but be quick, a lot of the allotted times have already been secured.

In May 2016 (from 9th to 22nd May inclusive), Peterborough United Football Club is offering supporters the chance to demonstrate their skills and don't panic, you won't have to be on a Premier League wage to do so.

We have introduced a 'Pitch Hire' package for May (subject to availability) and this exclusive offer is not just us letting you loose on the pitch - you will get changed in the dressing rooms, line-up in the tunnel and

## Package Includes:

- 3 hour hire (to include 90 minute match),
- Goals, corner flags, nets,
- Fully qualified officials,
- Use of Peterborough United's home and away changing rooms,
- First aider supplied,
- Opportunity for friends and colleagues to watch (max 200),
- Free parking,
- Opportunity for post-match buffet/refreshments (additional cost).

## Prices (vat inclusive):

10am: £900  
2pm: £1,000  
6pm: £1,100  
Weekends/Bank Holidays:  
£1,200

enter the pitch to your chosen entrance music.

Your friends and family are welcome to share your big day too, and can cheer you on from either the dugouts or the stands. Of course, that will add to the pressure of ensuring that you score, but every footballer is nervous when they cross that white line.

Pitch hire starts from just £900 inc VAT for a three hour experience.

So what are you waiting for? Whether you're the gaffer of your pub team or just think you and your mates have always been destined to play at the ABAX Stadium, get in touch now as places will be limited.

To book or to find out more, email [commercial@theposh.com](mailto:commercial@theposh.com) or call 01733 865665!





Peterborough  
and Fenland



# Have Moved!

**We are now located at:**

**Peterborough & Fenland Mind  
Morley Way  
Woodston  
Peterborough  
PE2 7BW**

**General Enquiries: 01733 530650**

**Advocacy Enquiries: 01733 530651**

**PLEASE DO GIVE US A CALL  
WE LOOK FORWARD TO HEARING FROM YOU**



## NOTICE BOARD

Email your photos  
and messages to  
[media@theposh.com](mailto:media@theposh.com)



Happy 50th Birthday for  
Sunday **Kev**, have a fab day  
from Sherry, Emma, Jake,  
Daniel and all your friends.

## HAPPY BIRTHDAY

Happy Birthday to **Callum Thornalley**,  
who is 14 today!  
Have a great day Callum.



Happy Birthday to  
**Riley Taylor**



Happy Birthday to  
**Jim Woods**, who celebrates  
his 68th birthday tomorrow.  
Happy Birthday and best  
wishes from the Woods  
family and Geoff.



Happy Birthday **Paul**.  
Welcome home!



# LOSING CONTROL

Managing your credit can be stressful or stress-free.

The difference is our personalised text and email alerts to help you make payments on time.

The difference is how great it feels to be in control.

**The difference is Capital One**  
[capitalone.co.uk](http://capitalone.co.uk)

**34.9% APR** representative variable

\*A registered mark of Capital One (Europe) plc. Registered Office: Trent House, Station Street, Nottingham, NG2 3HX.  
Registered in England and Wales. Company Number: 3879023. Authorised and Regulated by the Financial Conduct Authority.



- Played
- S Player subbed
- Unused sub
- Sub used & number of player replaced

2	Number of goals scored
	Yellow carded
	Red carded
	Unused





RIP KEITH QUILTER



## Player Appearances 2015/16

(Correct as of Wednesday 24th February 2016)

League Table correct as of Wednesday 24th February 2016



# MATCH DAY ★ *is* ★ PIE DAY

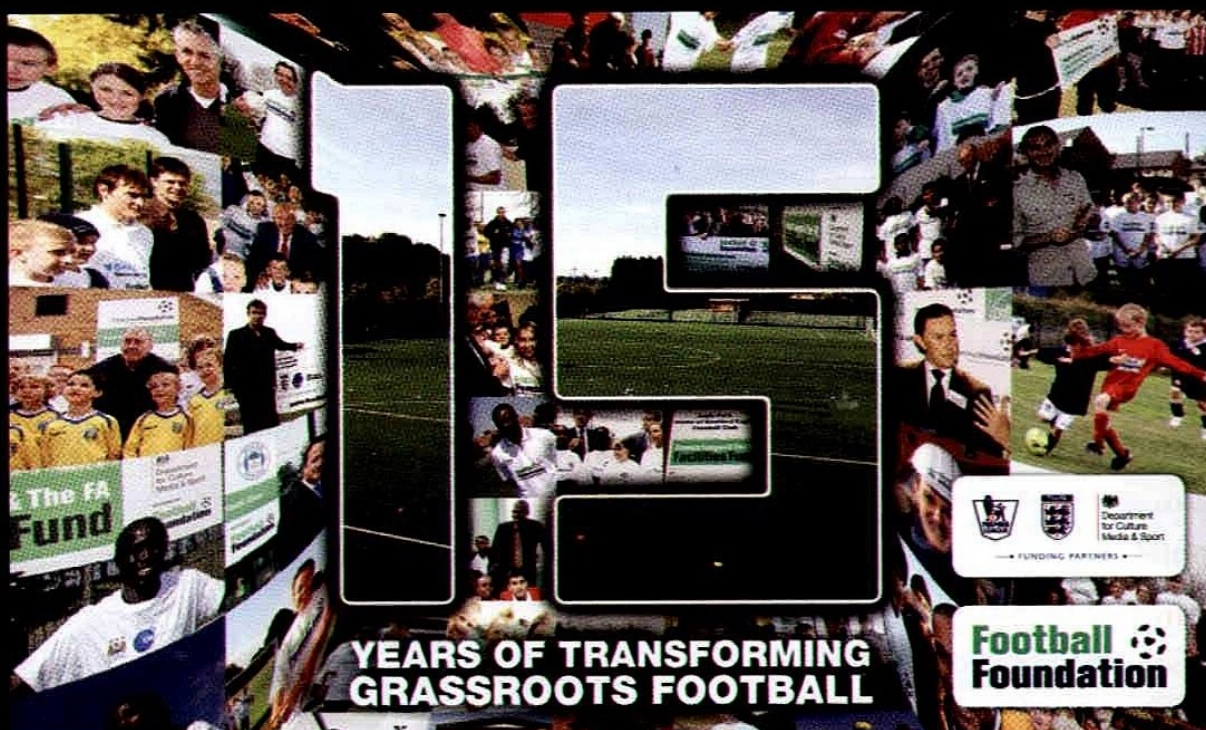
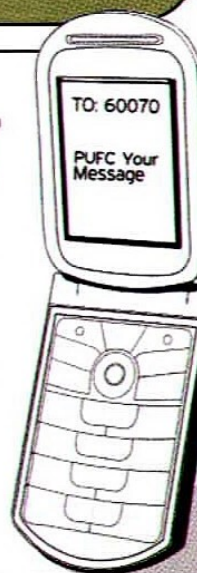
enjoy



Wrights







# TICKETS

www.theposhtickets.com



## 2016/17 SEASON TICKETS

Season tickets for the 2016/17 campaign are now on sale. For more information see page 8 or visit [www.theposh.com](http://www.theposh.com).

For home game admission prices see right hand side.



### BURY (A)

Tuesday 1st March 2016, 7.45pm



Tickets for this match are now on sale and are priced at **£18** for adults, **£12** for over 65s, **£12** for under 23s, **£6** for under 11s and under 5s are admitted for free.

Students (with a valid NUS/Student card) can gain entry for **£12** and the unemployed are priced at **£12** (with an up to date JSA book).

Ambulant disabled supporters pay **£12** with a carer free of charge and wheelchair disabled supporters pay **£16** with a carer free of charge. (Must have relevant documentation).

**foreverposh COACH TRAVEL**

Members **£19.00**

Non-Members **£21.00**

Departs **2.30pm**



### WIGAN ATHLETIC (A)

Saturday 5th March 2016, 3pm



Tickets for this match are now on sale and are priced at **£20** for adults, **£17** for over 65s, **£10** for under 18s, **£5** for under 11s and under 5s are admitted for **£2**.

The only price change on match day will be over 65s pay **£20** and under 5s goes up to **£5** if paid at turnstiles.

Ambulant and wheelchair disabled supporters pay the relevant price class with a carer free of charge.

**foreverposh COACH TRAVEL**

Members **£19.50**

Non-Members **£22.50**

Departs **9.30am**



### PORT VALE (H)

Saturday 12th March 2016, 3pm



## CONTACT INFORMATION

Ticketmaster Hotline

**0844 847 1934** (booking fees apply)

Calls are charged at 7ppm + network access fee

Ticket Office Enquiries

**01733 865674** (option 2)

Email

[tickets@theposh.com](mailto:tickets@theposh.com)

## TICKET OFFICE OPENING HOURS

Monday - Thursday	9am - 5pm
Friday	10am - 5pm
Home match Saturday	9am - 3.15pm
Away match Saturday	10am - 3pm
Sunday	CLOSED

## HOME ADMISSION PRICES

	Advance of Match Day	Match Day
<b>London Road Terrace</b>		
Adults	£18	£21
Seniors (60+)/18-21s	£12	£15
Juniors U18	£8	£11
<b>Main Stand</b>		
Adults	£23	£26
Seniors (60+)/18-21s	£14	£17
Juniors U18	£10	£13
<b>Motorpoint Stand</b>		
Adults	£20	£23
Seniors (60+)/18-21s	£13	£16
Juniors U18	£5	£5
<b>South Family Stand</b>		
Adults	£23	£26
Seniors (60+)/18-21s	£14	£17
Juniors U18	£5	£5
Children U10*	FREE	FREE
Family Ticket**	£46	£52

\* Under 10s must be accompanied by a paying adult over 18 years old (maximum of 3 children per adult)

\*\* Family Ticket - 2 Adult tickets and 2 Under 18s tickets for the South Family Stand only.

## NO BOOKING FEES ONLINE!

Avoid the ticket office queues and buy your tickets online where you can choose our print at home service.

[www.theposhtickets.com](http://www.theposhtickets.com)

The onus is on the purchaser to provide proof of any concessionary discounts. Failure to do so may result in a full adult priced ticket being charged.



# A WINNING TEAM WITH A BRAND NEW SIGNING



I want high  
fashion and  
a low deposit.  
#SR7

11:19 AM



## SR7 RANGE



# % APR

REPRESENTATIVE

PLUS FIRST 3 SERVICES FOR £99\*



### RIO SR7

£250 TOWARDS YOUR DEPOSIT

**£225**

customer deposit

**£225**

per month

£4,970 optional final payment

### NEW CEE'D SR7

**£349**

customer deposit

**£349**

per month

£7,565 optional final payment

### PICANTO SR7

£250 TOWARDS YOUR DEPOSIT

**£175**

customer deposit

**£175**

per month

£4,970 optional final payment



The Power to Surprise

**BOONGATE KIA**  
Home of 7 Year Warranty

Newark Road, Peterborough, Cambs, PE1 5UA. Tel: 01733 344344

www.boongatekia.co.uk email: sales@boongatekia.com



Now with over  
**15,000**  
reviews across the Kia range.

reevoo  
Read the reviews at  
kia.co.uk/reviews

#### SR7 TOP FEATURES

- Alloy Wheels • Bluetooth® with Music Streaming • Air Conditioning • Reversing Sensors • Privacy Glass • Automatic Headlight Control
- Leather Trimmed Steering Wheel & Gearshift • Electric Front Windows • Electrically Adjustable & Heated Door Mirrors

Fuel consumption in mpg (l/100km) for the Kia 'SR7' range shown: Urban 42.8 (6.6) – 48.7 (5.8), Extra Urban 55.4 (5.1) – 74.3 (3.8), Combined 50.4 (5.6) – 62.8 (4.5). CO2 Emissions are 105 – 130 g/km.

MPG figures are official EU test figures for comparative purposes and may not reflect real driving results. Available on Kia 'SR7' range between 01/07/15 and 30/09/15 inclusive. At the end of the agreement there are 3 options: (i) Renew: Part exchange the vehicle. (ii) Retain: Pay the Optional Final Payment to own the vehicle or (iii) Return the vehicle. Further charges may be made subject to mileage and condition of the vehicle. Excess mileage charge 14.9p per mile. Subject to status. T&Cs apply. 18s or over. Guarantee/Indemnity may be required. Kia Motors Finance RHI ISR. Models shown: Kia Picanto 'SR7' 3-door 1.0 65bhp 5-speed manual at £9,045 including £1000 customer saving. Kia Rio 'SR7' 3-door 1.25 84bhp 5-speed manual at £10,845 including £1,000 customer saving (Non offer price £11,845); New Kia Cee'd 'SR7' 1.4 CRDi 89bhp 6-speed manual at £16,290 including £750 customer saving. Customer savings vary by model derivative. Specification is subject to change without notice. Care-3 is the Kia Servicing Package that covers routine servicing and excludes wear parts. Offer not available with any other offer. Retail sales only. Details correct at time of going to press. 7 year / 100,000 mile manufacturer's warranty. For full terms and exclusions visit www.kia.co.uk.





**WE'RE  
MAKING  
FOOTBALL  
LEAGUE  
BETTING  
BETTER**

**sky BET**

**MORE MARKETS**

**ON YOUR TEAM THAN ANY  
OTHER BOOKMAKER**

**ARE YOU IN?**

[skybet.com/FL72](https://skybet.com/FL72)

18+ only. Terms and conditions apply. More Markets refers to Outright Markets, comparison made using Oddschecker. For more information visit [skybet.com/FL72](https://skybet.com/FL72). GAMBLE RESPONSIBLY. FOR MORE INFORMATION VISIT [WWW.GAMBLEAWARE.CO.UK](https://www.gambleaware.co.uk)



# BURY

## TUESDAY 1ST MARCH, 7.45PM



DISTANCE FROM ABAX STADIUM: 153 MILES  
ESTIMATED TRAVEL TIME BY CAR: 2 HOURS, 42 MINUTES



### HOW TO GET THERE

**By car:** Exit M60 at junction 17 (s/p A56 Whitefield, Salford). At roundabout follow signs to 'Whitfield A56, Radcliffe (A665), Bury A56' onto the A56. After 0.3 miles go straight over double traffic lights passing McDonalds on LHS (s/p Bury A56, Radcliffe A665). At lights after 0.8 miles (just after the 'Bull's Head' pub) bear right (s/p Bury A56). Straight on at lights after 1.0 miles (s/p Town Centre). After 1.0 miles turn right (s/p Football Ground) into Gigg Lane, the stadium is on right hand side after 0.1 miles.

**By train:** There is no railway station in Bury itself, so most fans travelling by train are likely to end up at one of the Manchester stations. Bury Metrolink is served by trams from Manchester Victoria & Piccadilly railway stations. Bury Metrolink Station is about a 10-15 minute walk from the ground.

STADIUM NAME: GIGG LANE

ADDRESS: GIGG LANE, BURY, LANCASHIRE, BL9 9HR

CAPACITY: 11,640

OFFICIAL CLUB WEBSITE: [WWW.BURYFC.CO.UK](http://WWW.BURYFC.CO.UK)






# Come on ref, time!

## ... for a Nando's

Come visit us at  
Nando's Peterborough!

 Find us on Facebook  
Nando's Peterborough



### Nando's



#### PETERBOROUGH UNITED

Manager: Graham Westley

- 1 Ben ALNWICK (GK)
- 2 Michael SMITH
- 3 Kgosi NTLHE
- 4 Shaun BRISLEY
- 5 Gabriel ZAKUANI
- 6 Jack BALDWIN
- 7 Jon TAYLOR
- 8 Michael BOSTWICK
- 9 Kyle VASSELL
- 10 Erhun OZTUMER
- 11 Marcus MADDISON
- 12 Ricardo ALMEIDA SANTOS
- 15 Jermaine ANDERSON
- 16 Harry BEAUTYMAN
- 18 Andrew FOX
- 19 Joe GORMLEY
- 20 Harry ANDERSON
- 21 Tom NICHOLS
- 22 Leonardo DA SILVA LOPES
- 24 Lee ANGOL
- 25 Jack FRIEND
- 26 Dion-Curtis HENRY (GK)
- 28 Souleymane COULIBALY
- 33 Chris FORRESTER
- 36 Martin SAMUELSEN
- 37 Jordan NICHOLSON
- 39 Shaquile COULTHIRST
- 40 Callum CHETTLE
- 41 Aaron WILLIAMS
- 42 Adil NABI
- 50 Harry TOFFOLO



Referee  
D Handley



Assistant Referees  
S Purkiss  
E Kaye



Fourth Official  
S Meredith



#### SWINDON TOWN

Manager: Luke Williams

- 1 Lawrence VIGOUROUX (GK)
- 2 Nathan THOMPSON
- 3 Brandon ORMONDE-OTTEWILL
- 4 Fabien ROBERT
- 6 Jordan TURNBULL
- 7 Drissa TRAORE
- 8 Yaser KASIM
- 10 Nicky AJOSE
- 14 Michael DOUGHTY
- 15 James BROPHY
- 16 Jordan STEWART
- 18 Louis THOMPSON
- 19 Jeremy BALMY
- 20 Jonathan OBIKA
- 22 Lee MARSHALL
- 23 Josh COOKE
- 24 Jermaine HYLTON
- 25 Tyrell BELFORD (GK)
- 26 Anton RODGERS
- 27 Bradley BARRY
- 28 Ellis IANDOLO
- 29 Raphael ROSSI-BRANCO
- 37 Jamie CALVIN



Scan the QR code to  
get the official teamsheet  
on your phone from  
approximately 30  
minutes before kick-off.



# snax GROUP

50% OFF  
YOUR FIRST FRESH BUFFET  
FROM  
**snaxGROUP**  
JUST CALL US ON  
01733 308080  
AND QUOTE "UP THE POSH"



[www.snaxgroup.co.uk](http://www.snaxgroup.co.uk)



Terms and Conditions Apply New Business Customers ONLY

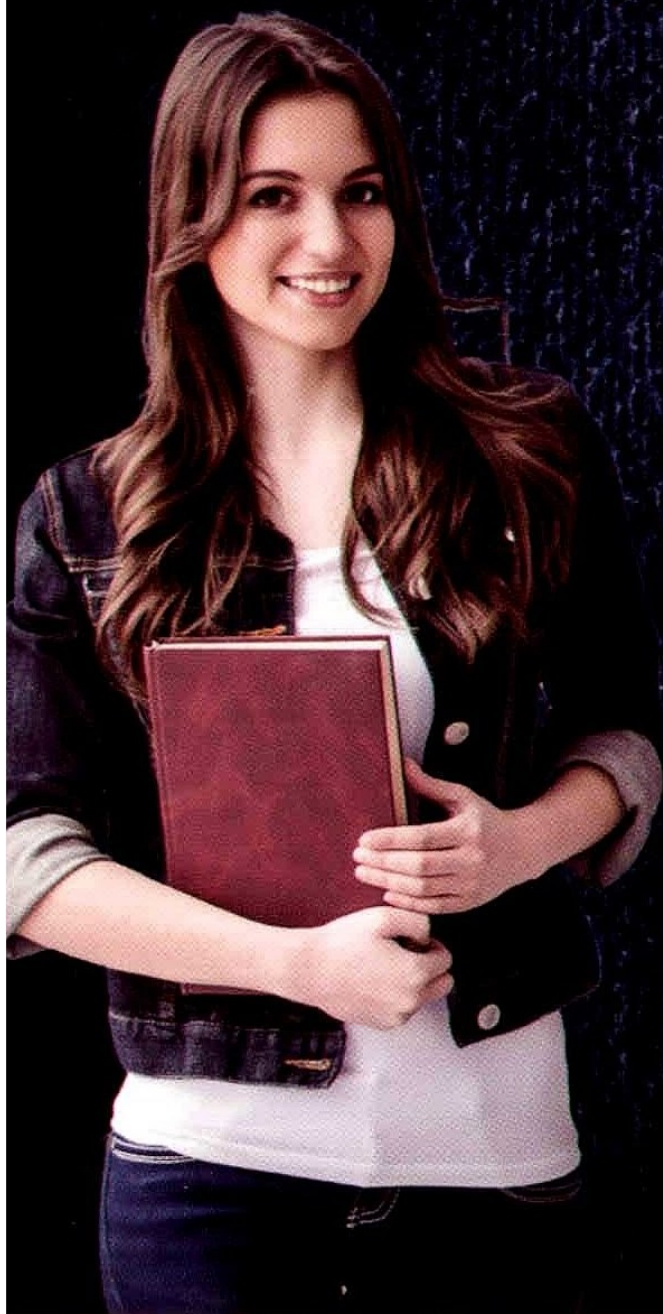




Peterborough  
Regional College

# APPLY NOW

FOR A WIDE  
RANGE OF  
FULL-TIME  
COURSES  
STARTING  
SEPTEMBER  
2016



Call: 0345 872 8722

[www.peterborough.ac.uk](http://www.peterborough.ac.uk)